



HAL
open science

The Magnetic Environment of a Stealth Coronal Mass Ejection

Jennifer O’kane, Cecilia Mac Cormack, Cristina H Mandrini, Pascal Démoulin, Lucie M Green, David M Long, Gherardo Valori

► **To cite this version:**

Jennifer O’kane, Cecilia Mac Cormack, Cristina H Mandrini, Pascal Démoulin, Lucie M Green, et al.. The Magnetic Environment of a Stealth Coronal Mass Ejection. *The Astrophysical Journal*, 2021, 908, 10.3847/1538-4357/abd2bf. obspm-03368211

HAL Id: obspm-03368211

<https://hal-obspm.ccsd.cnrs.fr/obspm-03368211>

Submitted on 8 Oct 2021

HAL is a multi-disciplinary open access archive for the deposit and dissemination of scientific research documents, whether they are published or not. The documents may come from teaching and research institutions in France or abroad, or from public or private research centers.

L’archive ouverte pluridisciplinaire **HAL**, est destinée au dépôt et à la diffusion de documents scientifiques de niveau recherche, publiés ou non, émanant des établissements d’enseignement et de recherche français ou étrangers, des laboratoires publics ou privés.

The Magnetic Environment of a Stealth Coronal Mass Ejection

JENNIFER O'KANE ¹, CECILIA MAC CORMACK ^{2,3}, CRISTINA H. MANDRINI ^{2,3}, PASCAL DÉMOULIN ^{4,5},
LUCIE M. GREEN ¹, DAVID M. LONG ¹ AND GHERARDO VALORI ¹

¹*Mullard Space Science Laboratory, UCL, Holmbury St Mary, Dorking, Surrey, RH5 6NT, UK*

²*Instituto de Astronomia y Física del Espacio (IAFE), CONICET-UBA, Buenos Aires, Argentina*

³*Facultad de Ciencias Exactas y Naturales (FCEN), UBA, Buenos Aires, Argentina*

⁴*LESIA, Observatoire de Paris, Université PSL, CNRS, Sorbonne Université, Univ.Paris Diderot, Sorbonne Paris Cité, 5 place Jules Janssen, 92195 Meudon, France*

⁵*Laboratoire Cogitamus, 1 3/4 rue Descartes, 75005 Paris, France*

ABSTRACT

Interest in stealth coronal mass ejections (CMEs) is increasing due to their relatively high occurrence rate and space weather impact. However, typical CME signatures such as extreme-ultraviolet dimmings and post-eruptive arcades are hard to identify and require extensive image processing techniques. These weak observational signatures mean that little is currently understood about the physics of these events. We present an extensive study of the magnetic field configuration in which the stealth CME of 3 March 2011 occurred. Three distinct episodes of flare ribbon formation are observed in the stealth CME source active region (AR). Two occurred prior to the eruption and suggest the occurrence of magnetic reconnection that builds the structure which will become eruptive. The third occurs in a time close to the eruption of a cavity that is observed in STEREO-B 171Å data; this subsequently becomes part of the propagating CME observed in coronagraph data. We use both local (Cartesian) and global (spherical) models of the coronal magnetic field, which are complemented and verified by the observational analysis. We find evidence of a coronal null point, with field lines computed from its neighbourhood connecting the stealth CME source region to two ARs in the northern hemisphere. We conclude that reconnection at the null point aids the eruption of the stealth CME by removing field that acted to stabilise the pre-eruptive structure. This stealth CME, despite its weak signatures, has the main characteristics of other CMEs, and its eruption is driven by similar mechanisms.

Keywords: Sun: coronal mass ejections (CMEs) — Sun: activity — Sun: corona — Sun: magnetic fields

1. INTRODUCTION

Coronal mass ejections (CMEs) are large eruptions of solar plasma and magnetic field, expelled into the heliosphere at speeds ranging from a few tens to a few thousands of km s⁻¹ (see review by Webb and Howard 2012). Stealth CMEs form a subset of all eruptive events and they are characterised by absent or faint signatures of eruption in the corona, with no obvious flaring, filament eruption, or strong EUV dimmings apparent. Following the first report of a stealth CME (Robbrecht et al. 2009), studies have shown common trends such as slow propagation speeds typically less than 500 km s⁻¹ (D’Huys et al. 2014), a higher relative proportion of stealth CMEs at solar minimum (~30% of CMEs, Ma et al. 2010) and an origin in the mid-corona from around 1.2 to 3.0 R_⊙ from Sun centre (Howard and Harrison 2013). The low speed and acceleration of mid-coronal stealth CMEs are

then likely due to the low magnetic field strength and free magnetic energy present at those altitudes. In more recent works, image processing techniques have been able to enhance EUV and coronagraph data to reveal the fainter on-disc signatures associated with stealth CMEs (Alzate and Morgan 2017; O’Kane et al. 2019). These findings indicate that stealth CMEs often produce the same characteristic signatures as non-stealth CMEs, albeit weaker, meaning that the formation of the eruptive structure and the physical processes involved in stealth CMEs can be investigated from both observational and modelling perspectives.

CME eruption processes involve an energy storage phase, which may be the product of flux emergence and/or photospheric flows. Following this, an energy release phase sets in when ideal or non-ideal (resistive) processes lead to the rapid expulsion of the structure and

the release of energy of the order 10^{22} - 10^{25} J. The quasi-static evolution during the energy build-up phase may also be a period in which a magnetic flux rope is built via reconnection in the photosphere or chromosphere (Green et al. 2011) or in the mid-corona (Patsourakos et al. 2013; James et al. 2017). The specific details of the pre-eruptive magnetic field configuration will then influence which mechanisms may act as the driver to produce the CME, e.g., the role of flare-related reconnection or an ideal magnetohydrodynamic instability (for a review of CME processes see Green et al. 2018).

Stealth CMEs are expected to follow this energy storage and release sequence but the weak or absent signatures of flaring are an indication of only weak energy release associated with magnetic reconnection during the eruption itself. Kinematic studies suggest that the rise of a stealth CME follows an exponential profile, which is indicative of an instability (O’Kane et al. 2019).

So far, few modelling studies have been conducted to shed light on the mechanisms behind stealth CME initiation. Comparisons to so-called streamer blowout CMEs have been drawn in which a streamer brightens and swells in the days prior to its eruption. Applying this scenario to modelling of stealth CMEs involves storing energy through slow shearing motions such as differential rotation, that displaces the footpoints of the coronal field along an extended polarity inversion line (Vourlidas and Webb 2018), with reconnection playing the key role in ejecting the stealth CME structure and no pre-eruption flux rope necessarily being present (Lynch et al. 2016). The shortage of modelling studies is likely related to the relatively low number of detailed observational studies, caused by the difficulties of observing a relatively high-altitude structure formed in weaker magnetic field and within lower plasma density regions.

This study bridges observations and magnetic field modelling for stealth CMEs. We build on the previous work of Nitta and Mulligan (2017) and O’Kane et al. (2019) who found the source region of a stealth CME that occurred on 3 March 2011 to be NOAA active region (AR) 11165. In this work, we use local and global magnetic force-free field modelling to investigate the connectivity between the source region and its surroundings. Section 2 outlines the data and methods used for this study. Section 3 summarises the event, the previous findings and the remote sensing results. Section 4 contains the modelling results. Section 5 discusses all the final conclusions.

2. DATA AND METHODS

The evolution of the photospheric magnetic field in AR 11165 was analysed using the Helioseismic and Mag-

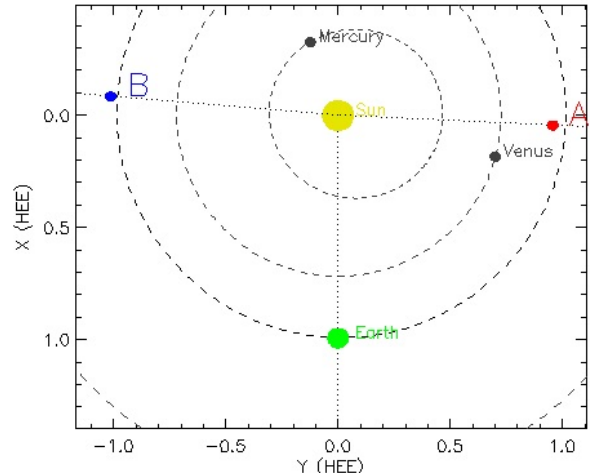


Figure 1. The positions of the STEREO spacecraft at 00:00 UT on 3-Mar-2011.

netic Imager data (HMI, Scherrer et al. 2012) on board the Solar Dynamics Observatory (SDO, Pesnell et al. 2011). HMI takes full disc images of the Sun, making narrow-band measurements around the photospheric line 6173 \AA and enabling the photospheric magnetic field to be derived. The AR flux is calculated using the Space Weather HMI Active Region Patches data series (SHARP, Bobra et al. 2014). Only flux density values greater than $\pm 150 \text{ G}$ are considered.

The evolution of the EUV corona in the time leading up to and during the stealth CME that was observed on 3 March 2011 is studied using data from SDO and the Solar Terrestrial Relations Observatory (STEREO, Kaiser et al. 2008). Observations were obtained from the 304 \AA , 193 \AA and 211 \AA passbands by the SDO/Atmospheric Imaging Assembly (AIA, Lemen et al. 2011) with a 5 minute cadence. At the time of the eruption STEREO-A was 87° ahead of Earth and STEREO-B was 95° behind (see Figure 1). The 195 \AA (5 minute cadence) and 171 \AA (2 hour cadence) passbands from STEREO EUVI, which forms part of the Sun Earth Connection Coronal and Heliospheric Investigation instrument suite (SECCHI, Howard et al. 2008), were used to analyse the plasma emission structures of the stealth CME source region. The EUV data were subject to three image processing techniques.

1. The Multi-Scale Gaussian Normalization technique (MGN, Morgan and Druckmüller 2014) that enhances small-scale structures in the corona and which has previously been used to identify signatures associated with stealth CMEs (Alzate and Morgan 2017; O’Kane et al. 2019).

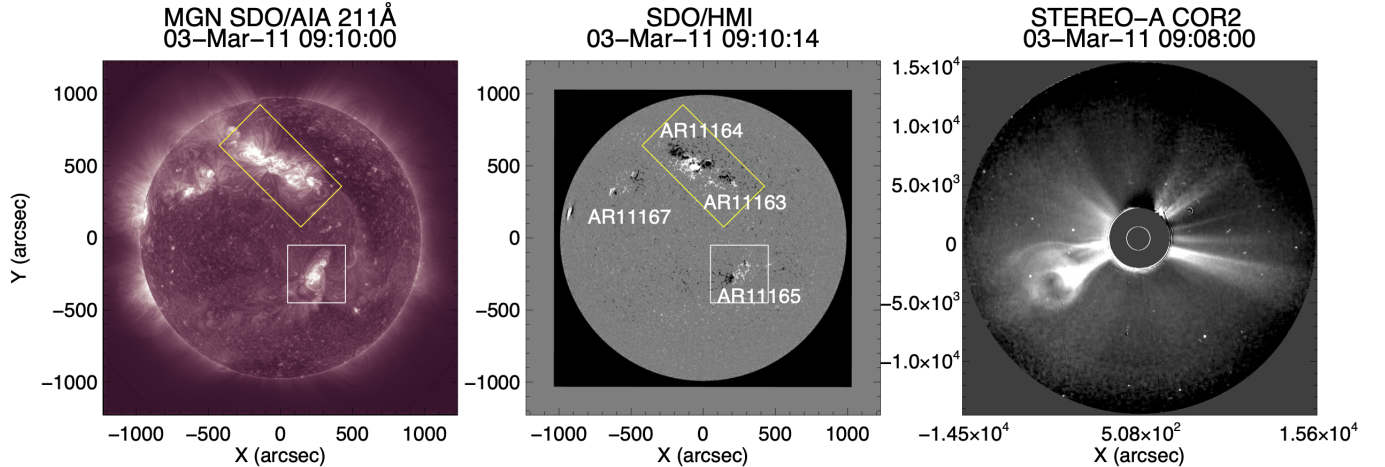


Figure 2. Left: MGN processed SDO AIA 211Å image at 09:10 UT on 3 March 2011. The white box indicates the southern AR 11165, whilst the yellow box indicates the complex formed by ARs 11163 and 11164 in the northern hemisphere. Middle: The corresponding SDO HMI full-disc image. Right: STEREO-A COR2 image at 09:08 UT on 3 March 2011, showing that the stealth CME has a 3-part structure.

2. The Normalizing-Radial-Graded Filter (NRGF, Morgan et al. 2006) technique that enhances off-limb structures in EUV or white light coronagraph data.
3. Difference imaging that reveals dynamic changes in the corona. For stealth CMEs it is necessary to use temporal separations of 30 minutes or more (Nitta and Mulligan 2017; O’Kane et al. 2019) due to the relatively slow evolution of these events.

The NRGF-processed COR1 and COR2 coronagraphs onboard the STEREO spacecraft were used to identify the stealth CME, and determine its plane-of-sky propagation direction and kinematics (mainly determined from the STEREO-B perspective). The combined EUV and coronagraph datasets provide overlapping fields of view; EUVI observes to a height of around $1.7 R_{\odot}$ from Sun centre, COR1 observes from $1.5 - 4 R_{\odot}$, and COR2 from $2.5 - 15 R_{\odot}$.

The kinematics of the eruption were determined using the COR1 data following the method of Byrne et al. (2013). This approach uses a residual re-sampling bootstrapping technique combined with the Savitsky-Golay algorithm to estimate the errors associated with the kinematics and derive the point-to-point velocity and acceleration of the CME. This approach has been shown by Byrne et al. (2013) to be more rigorous than a normal numerical derivative approach and enables an estimation of the point-to-point kinematics that would not be possible using a simple fit to the distance-time data.

3. OBSERVATIONAL OVERVIEW

The stealth CME was first detected in the Large Angle and Spectrometric Coronagraph (LASCO) C2 data as a partial halo at 05:48 UT on 3 March 2011. This event has previously been studied by Nitta and Mulligan (2017) who showed evidence of weak dimming signatures that indicated its source region was AR 11165. The analysis by O’Kane et al. (2019) further supports this finding and additionally indicates that the CME could be the result of the eruption of a magnetic structure likely located at an altitude of $\sim 1.34 R_{\odot}$ from Sun-centre, as determined from radio data. Figure 2 shows the location of AR 11165 in the southern hemisphere near disc centre (left and central panels) and the clear circular cross-section structure of the ejecta as seen in STEREO-A COR2 data (right panel). In the northern hemisphere, a number of larger and more complex ARs were present. In this section we provide an overview of the evolution of the line-of-sight photospheric magnetic field, corona and the kinematics of the CME from an observational perspective.

3.1. Photospheric Magnetic Field Evolution

AR 11165 has a small bipolar magnetic configuration. As detailed in O’Kane et al. (2019) AR 11165 began to emerge on 25 February 2011 at the polarity inversion line of a previously decayed AR. In fact, the polarity inversion line was the site of repeated flux emergence with further episodes of emergence observed over a time period of ~ 44 hours starting at 10:00 UT on 28 February 2011. Figure 3 (bottom panel) shows the evolution of the radial component of the flux in the AR, with a 6-hour running average from 12 minute cadence data. The difference of approximately a factor of 2 between

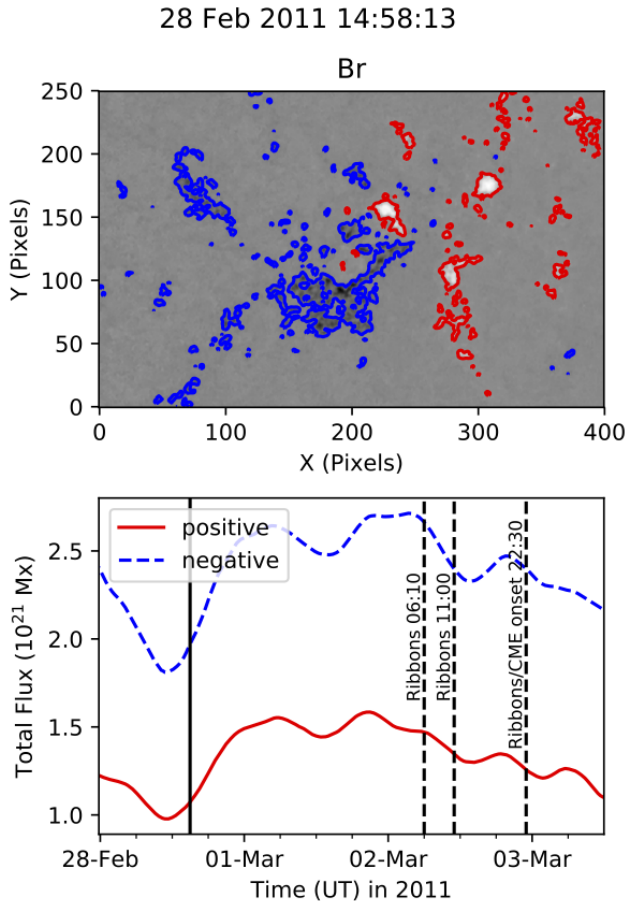


Figure 3. Radial magnetic field component of AR11165. The top panel shows a snapshot at 14:58 UT on 28 February 2011, with negative and positive magnetic field surrounded by red and blue contours at ± 150 G, respectively. The bottom panel shows the evolution of the positive and negative flux over the 84 hour period, before and after the stealth CME, from 00:00 UT on 28 February 2011 to 12:00 UT on 3 March 2011. The black solid line indicates the time of the HMI snapshot in the top panel, whilst the three dashed lines indicate the times of the three two-ribbon formation episodes discussed in Section 3.2. The third of these episodes is probably associated with the stealth CME initiation.

the negative and positive fluxes is likely due to the difficulty in distinguishing the negative flux emerging as part of AR 11165 from that of the pre-existing negative flux, some of which has been captured by the method used.

3.2. Evolution of the corona prior to eruption

The MGN processed 304 \AA AIA data show that AR 11165 has a bright core interwoven with dark absorbing plasma threads (see Figure 4). The 304 \AA data also reveal three episodes of two-ribbon flare formation at

the periphery of the AR bright core: two episodes occur after the flux emergence has ended (see Figure 3) but prior to the stealth CME and one occurs at the time of the stealth CME probable onset. The flare ribbons are faint and lack the classic hooks that would typically be observed in association with the eruption of a flux rope. However, given that stealth CMEs lack clear observational signatures due to their lower energy, weaker flare ribbons (or incomplete ribbons, because not all field lines undergoing reconnection have heated plasma at their footpoints) are to be expected. Then, the faint flare ribbons are in keeping with the stealth nature of the CME. Figure 4 shows that the flare ribbons are at least partially rooted in the dispersed magnetic field of the previously decayed AR, rather than involving the newly emerging flux. This is most apparent in the flare ribbons that are located on the positive polarity field and indicates that the associated reconnection process involves structures that are overlying the emerging bipole.

The first episode of flare ribbon formation begins on 2 March 2011 at $\sim 06:10$ UT (Figure 4, panel 2). The ribbons remain illuminated for around 4 hours and are also temporally coincident with a reorganisation of the corona as seen in AIA 193 \AA data. Details of the coronal evolution are given in (O’Kane et al. 2019) but in summary the lower altitude section of a loop structure apparently connected to the eastern ribbon dims and appears to expand at $\sim 06:10$ UT on 2 March 2011. STEREO-A EUVI 195 \AA data also show the motion of this loop structure on the eastern side. From this perspective a southward motion of the loop leg is also detected.

The second episode of two-ribbon flare formation begins on 2 March 2011 at $\sim 11:00$ UT and the ribbons remain bright for several hours fading by $\sim 15:00$ UT on 2 March 2011 (Figure 4, panel 3). As is the case with the first flare ribbon episode, the ribbons of the second episode form and are extended on the western side further to the north than the AR main positive polarity concentration. Both the first and the second ribbon episodes are temporally coincident with coronal brightenings observed in the AIA 335 \AA waveband data at $06:30$ UT and $15:45$ UT on 2 March 2011. STEREO EUVI 195 \AA data also show a brightening of the active region and the formation of new loops at $07:30$ UT and $11:30$ UT, coincident in time with the first and second episode of ribbon formation respectively. However these brightenings are not sufficient to produce flares that are detectable in the GOES soft X-ray light curve. No separation of the two ribbons is observed in either episode in keeping with the confined nature of the flares (i.e. no eruptions were observed). This, along with the location

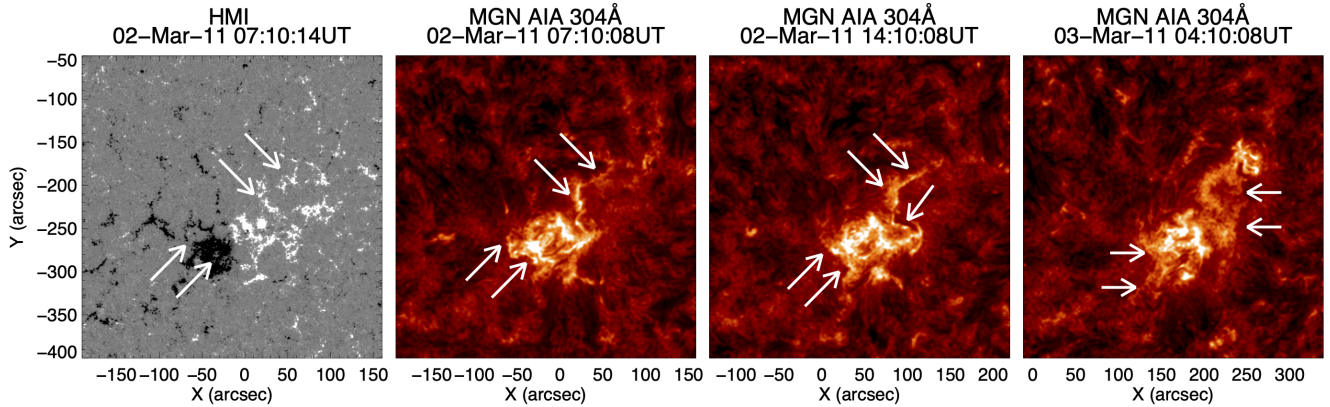


Figure 4. Two-ribbon formation as seen in the MGN processed AIA 304 Å data (second, third and fourth panels) with HMI line-of-sight magnetogram for comparison (first panel). There are three main episodes of two-ribbon formation shown by the AIA 304 Å data. The ribbon locations are indicated by the white arrows on the HMI magnetic map for the first episode. The first two episodes are associated with confined flaring and, as seen in the second and third panels, the ribbon locations are similar except for an elongation to the south of the northern ribbon (notice the additional arrow in the third panel). The third episode is probably associated with the eruption of the stealth CME; the ribbons move outwards and appear farther to the east and west of the AR center. In all cases the ribbons look patchy and their intensity is lower than that of the kernels located closer to the AR magnetic inversion line.

of the ribbons at the AR periphery, indicates that the reconnection site is located above its core field.

At $\sim 22:30$ UT on 2 March 2011 the two ribbons activate for a third time, however this time they separate away from the AR core (Figure 4, panel 4). The two ribbons are observed to separate from each other over an approximately eight-hour period. Interpreting these flare ribbons in the context of the standard two-ribbon flare model and subsequent studies (see Moore and Labonte 1980; Kitahara and Kurokawa 1990; Fletcher et al. 2004; Qiu 2009) would indicate that, during the first two episodes of two-ribbon formation, a reconfiguration of the coronal magnetic field above the newly emerged flux (AR core) occurs. This reconfiguration involves magnetic reconnection which most probably played a key role in forming the structure that then went on to erupt during the third episode of ribbon occurrence. This finding adds to the growing body of work showing that eruptive structures can form during reconnection episodes in the corona that produce confined flares and which could have a flux rope configuration (Patsourakos et al. 2013; James et al. 2017). From the displacement of the flare ribbons with respect to a direction parallel to the polarity inversion line and the shear of the AR coronal loops we infer that its magnetic field was of positive chirality, in agreement with the positive magnetic shear found in coronal loops (see also section 4.1 and Figure 9).

STEREO-A COR1 data show that prior to the stealth CME two other small and faint Earth-directed eruptions occur. The first being initially seen in the COR1

field-of-view at 06:00 UT and the second at 11:30 UT on 2 March 2011. However, these eruptions originate from the northern hemisphere and not from AR 11165. Their small and faint structure makes determining their specific source region challenging. A small eruption is observed from AR11167 which is likely the source of the CME observed at 06:00 UT. Meanwhile, AIA and EUVI data show ongoing dimming on the southern side of NOAA ARs 11163 and 11164 between 00:00 UT and 08:00 UT on 2 March 2011, which may be associated with the CME observed in COR1 at 11:30 UT.

3.3. Kinematics of the stealth CME eruption

The lack of strong plasma emission from the erupting structure in EUV wavebands (and hence the classification of this event as a stealth CME) prevents a detailed analysis of the CME initiation and rise profile in EUV imaging data. However, a bright concave-up structure, that is best seen in STEREO-B EUVI 171 Å data, is observed at 00:14 UT (Figure 5, panel e), 1.75 hours after the third episode of flare ribbon formation. The 2-hour cadence of EUVI 171 Å data prevents a good analysis of the temporal evolution of this structure but it is seen again in the following image at 02:14 UT on 3 March 2011 (Figure 5, panel f). The concave-up structure observed in CMEs is interpreted as indicating the underside of a flux rope.

Likewise, in the coronagraph data (COR1), there is no discernible structure at the leading edge of the stealth CME, only a concave-up structure at its trailing edge. The concave-up structure is followed in STEREO-B COR1 in order to determine the speed and acceleration

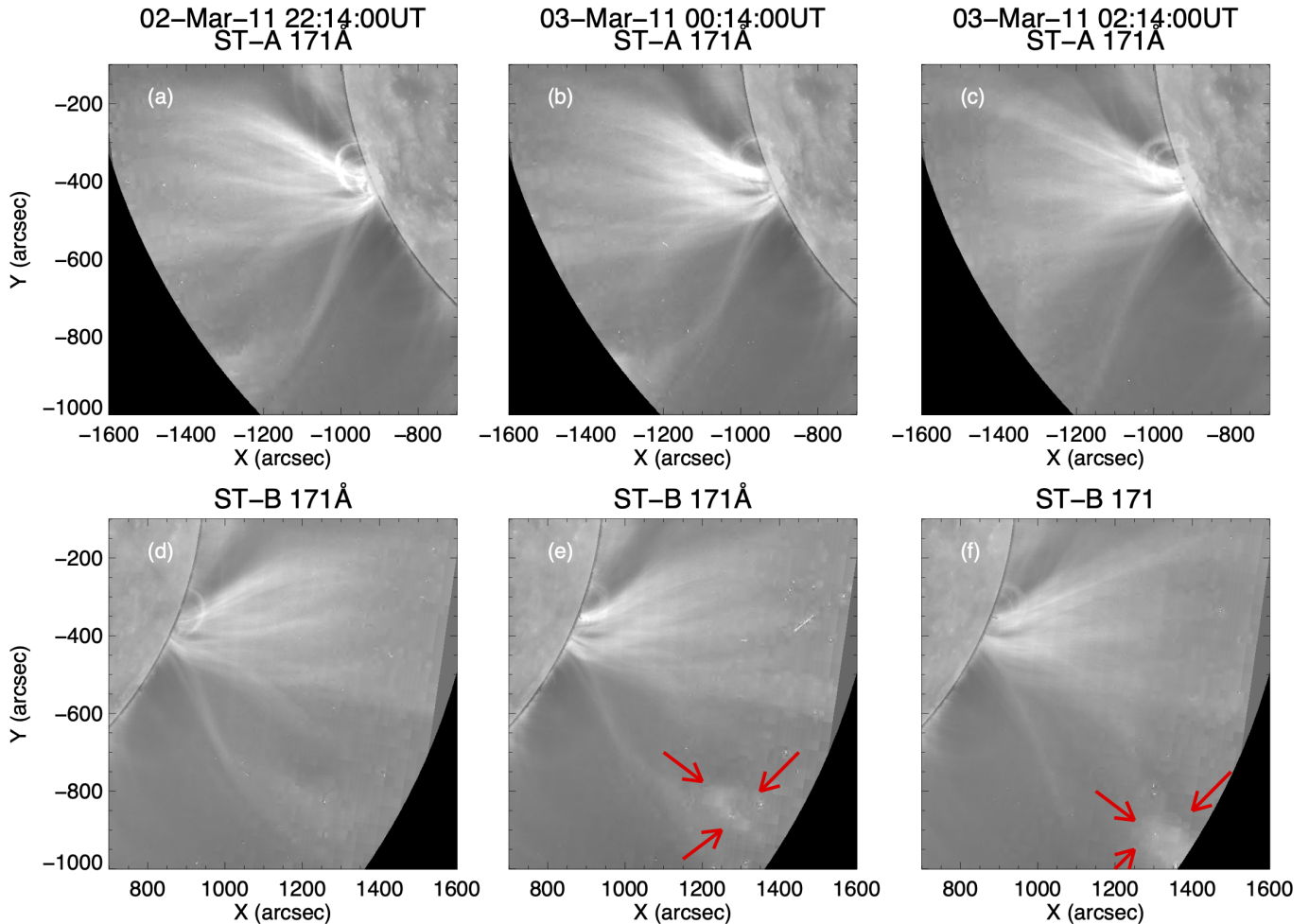


Figure 5. STEREO-A (panels a-c) and STEREO-B (panels d-f) EUVI 171 Å images illustrating the configuration of AR 11165 and the larger-scale corona surrounding the active region. EUVI-B data show an outward moving bright concave-up structure at 00:14 UT and 02:14 UT on 3 March 2011 as indicated by the red arrows in panels e and f. The concave-up structure is not seen in panel d.

of the eruption. However, it is not possible to confidently track the same plasma structure between EUVI data and coronagraph data due to the differing emission processes, so the kinematics of the CME are calculated only from STEREO-B COR data with a note that the EUVI-B concave-up structure is measured to be at a height of $1.54 R_{\odot}$ from Sun-centre in the plane-of-the-sky at 00:14 UT and $1.67 R_{\odot}$ at 02:14 UT on 3 March 2011 (Figure 5 panels e and f), giving a very approximate plane-of-sky rise speed of 17 km s^{-1} . These heights are consistent with the underside of the stealth CME when it is first detected in STEREO-B COR1 data early on 3 March 2011 (see Figure 6).

The top panel of Figure 6 shows the height-time variation of the erupting CME using data from STEREO-B COR1 along a radial slice at 120° measured in the clockwise direction from solar north. Figure 6 panel b shows the identified evolution of the underside of the stealth

CME fitted using a Savitsky-Golay bootstrapping technique (cf. Byrne et al. 2013). This approach enables the point-to-point variation of the speed and acceleration of the CME to be estimated as shown in panels c and d of Figure 6. The initial measured speed of the white light CME, as determined from coronagraph data, at 04:23 UT on 3 March was found to be $\sim 31 \text{ km s}^{-1}$, with an acceleration of $\sim 102 \text{ m s}^{-2}$, consistent with the speed found from EUVI-B. From the kinematic data and the AIA 304 Å flare ribbon formation we conclude that the stealth CME initiation began in the time period between 22:30 UT on 2 March 2011 (the time in which the third episode of flare ribbons begin) to 00:14 UT on 3 March 2011 (the time in which the concave-up structure is first observed in EUVI-B).

3.4. Transequatorial Loops

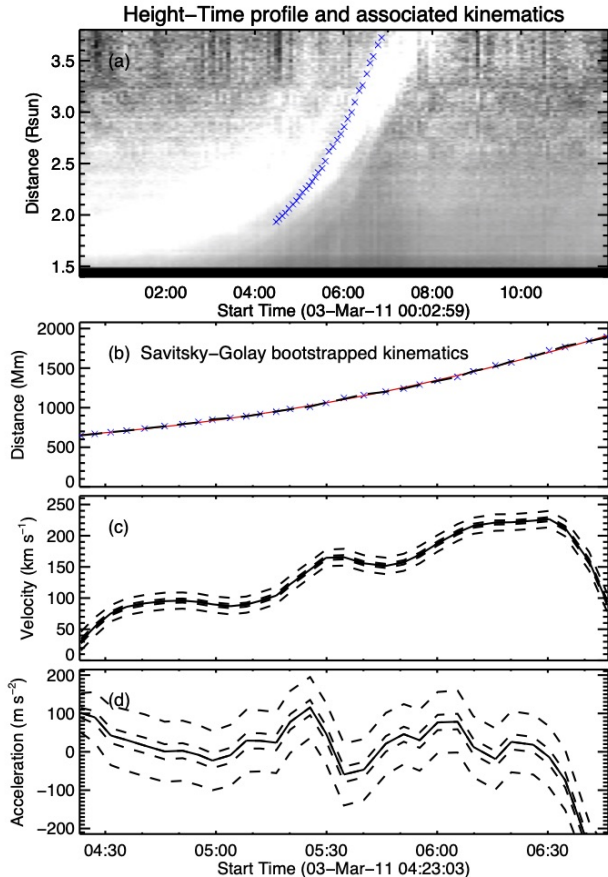


Figure 6. The height-time profile of the CME concave-up structure, with kinematics estimated using the Savitsky-Golay bootstrapping technique. Panel (a) displays the height-time image from the NRGF COR1-B data, with the manually tracked points as blue crosses. Panel (b) displays the tracked points as the median of the Savitsky-Golay fit as black dashed lines. Panel (c) and panel (d) are the estimated velocity and acceleration profiles respectively, with the median (solid black line), interquartile boundaries (inner dashed lines), and upper and lower fences (outer dashed lines) all shown.

The evolution of the corona at a larger scale, encompassing AR 11165 and the complex formed by ARs 11163 and 11164 to the north, is studied using SDO/AIA images and STEREO/EUVI data. As seen in STEREO EUVI 195 Å waveband data from both Ahead and Behind spacecraft, transequatorial loops exist between these ARs in the northern and southern hemispheres. STEREO-A shows that these loops are visible by 18:30 UT on 2 March 2011, while they are observed by 19:55 UT in STEREO-B. From the Earth perspective, the transequatorial loops are observed in AIA 193 Å data around 19:40 UT on 2 March 2011 (Figure 7 left panel). These observations collectively show

the presence of these large scale loops before the onset of the stealth CME but after the time period in which the coronal field above AR 11165 was reconfigured via magnetic reconnection as evidenced by the two-ribbon flares. We have searched for transequatorial loops in soft X-ray imaging data using Hinode/XRT; however, there is a gap in the full-disc XRT data between 2 March at $\approx 06:20$ UT and 3 March 2011 at $\approx 06:20$ UT.

After the stealth CME, the transequatorial loops are still observed, albeit at a higher altitude indicating that a reconfiguration occurred, perhaps due to reconnection driven by the expanding structure of the stealth CME. STEREO-A EUVI data indicate that these higher altitude loops can be seen by 08:25 UT on 3 March and in STEREO-B EUVI data by 19:55 UT on the same day. The loops are persistent and continue to be observed into 4 March 2011 at which time STEREO-B data show that the top of the transequatorial loops reach a height of ≈ 234 Mm above the photosphere ($1.34 R_{\odot}$ from Sun-centre, see Figure 7). The loops are not clear in AIA at this point, presumably due to the low plasma density of the loops against a higher density background.

4. MAGNETIC FIELD MODELLING

To put the set of observations in a framework that allows us to understand the origin of the stealth CME, we have modelled the coronal magnetic field. We use two different approaches, a local model in Cartesian coordinates and two global models in spherical coordinates.

4.1. AR 11165 Magnetic Field Model

Figure 8, two left panels, shows the photospheric magnetic field configuration and the coronal emission structures of the northern hemisphere active region complex formed by ARs 11163 and 11164. These ARs exhibit sheared loops as can be seen by the way they cross our approximated polarity inversion lines (PILs, depicted as red-dashed lines). In particular, the PIL in AR 11164 is quite complex and we only trace the main one. The global coronal structure of this AR displays roughly an inverse S-shape. The PIL of AR 11163 is much simpler and the loop inclinations to the PIL marginally also indicate a negative shear (see e.g. Palmerio et al. 2017).

Figure 8, two right hand-side panels, show that AR 11165 has positively sheared loops as is expected from the hemispheric helicity trend for ARs in the southern hemisphere (Pevtsov and Balasubramaniam 2003). To confirm the sign of the shear, we have extrapolated the line-of-sight magnetic field of AR 11165 into the corona, using the HMI magnetogram under the linear force-free field (LFFF) approximation ($\nabla \times \vec{B} = \alpha \vec{B}$, with α constant, Mandrini et al. 1996; Démoulin et al. 1997). An

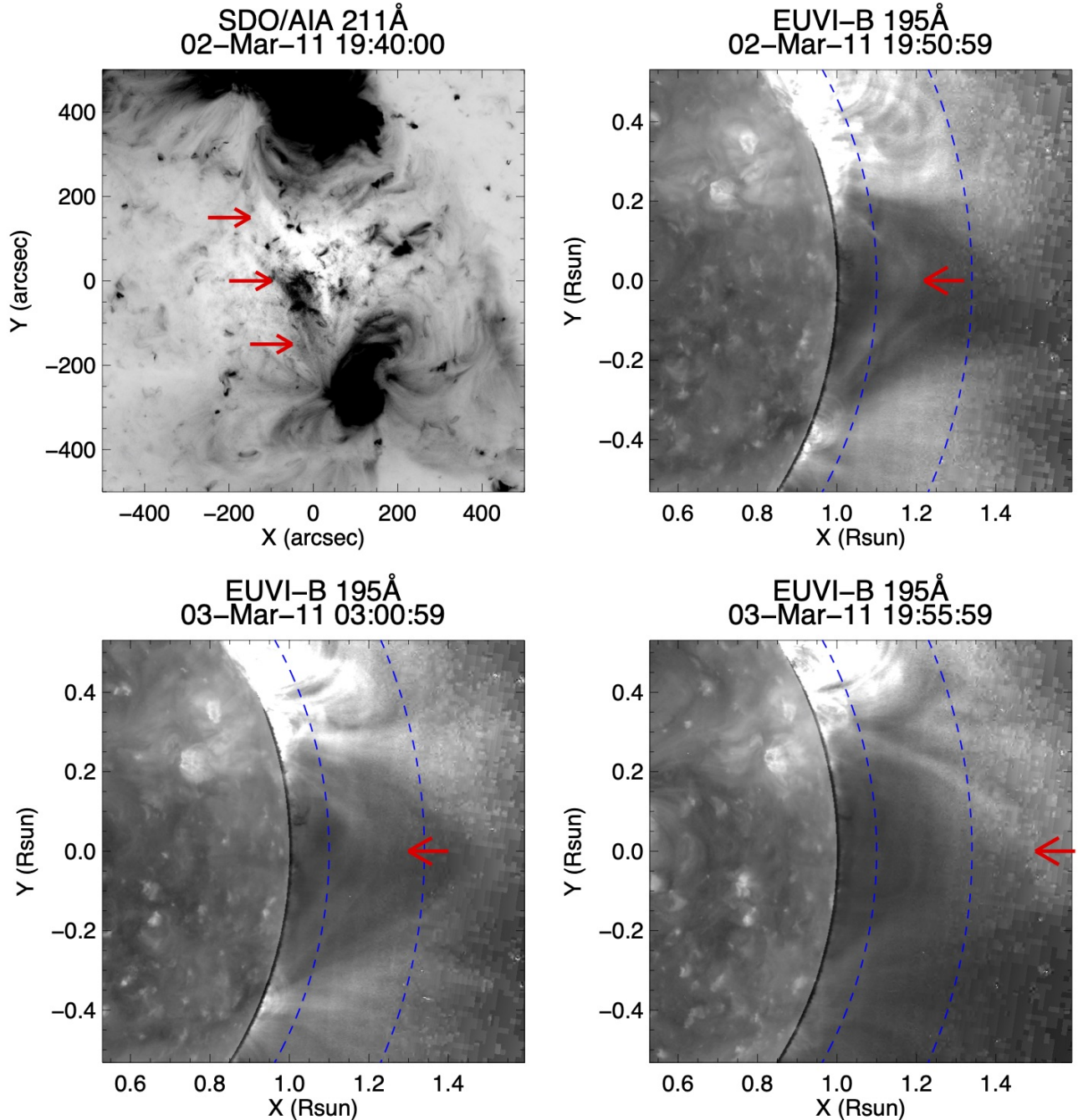


Figure 7. Top Left panel: NRGF-processed image of AIA 211 Å showing the transequatorial loops observed before the onset of the stealth CME, indicated by the red arrows. Top Right panel: EUVI-B 195 Å NRGF-processed image showing the transequatorial loops observed before the onset of the stealth CME, pointed out by the red arrow. Bottom Left and Right panel: EUVI-B 195 Å NRGF-processed image with the transequatorial loops observed after the onset of the stealth CME, pointed out by the red arrow. The blue-dashed lines indicate a height of 118 Mm and 234 Mm above the photosphere (1.1 and 1.34 solar radii from Sun center).

example of the model is shown in Figure 9. The value of the free parameter of the model, α , is set to best match the observed loops at the time of the magnetogram used for the extrapolation, following the procedure discussed by Green et al. (2002). The best-matching value is pos-

itive, $\alpha = 6.3 \times 10^{-3} \text{ Mm}^{-1}$. Our model also carries out a transformation of coordinates from the local AR frame to the observed one (see Démoulin et al. 1997) so that our computed field lines can be compared to the AIA observed loops (as shown in Figure 9).

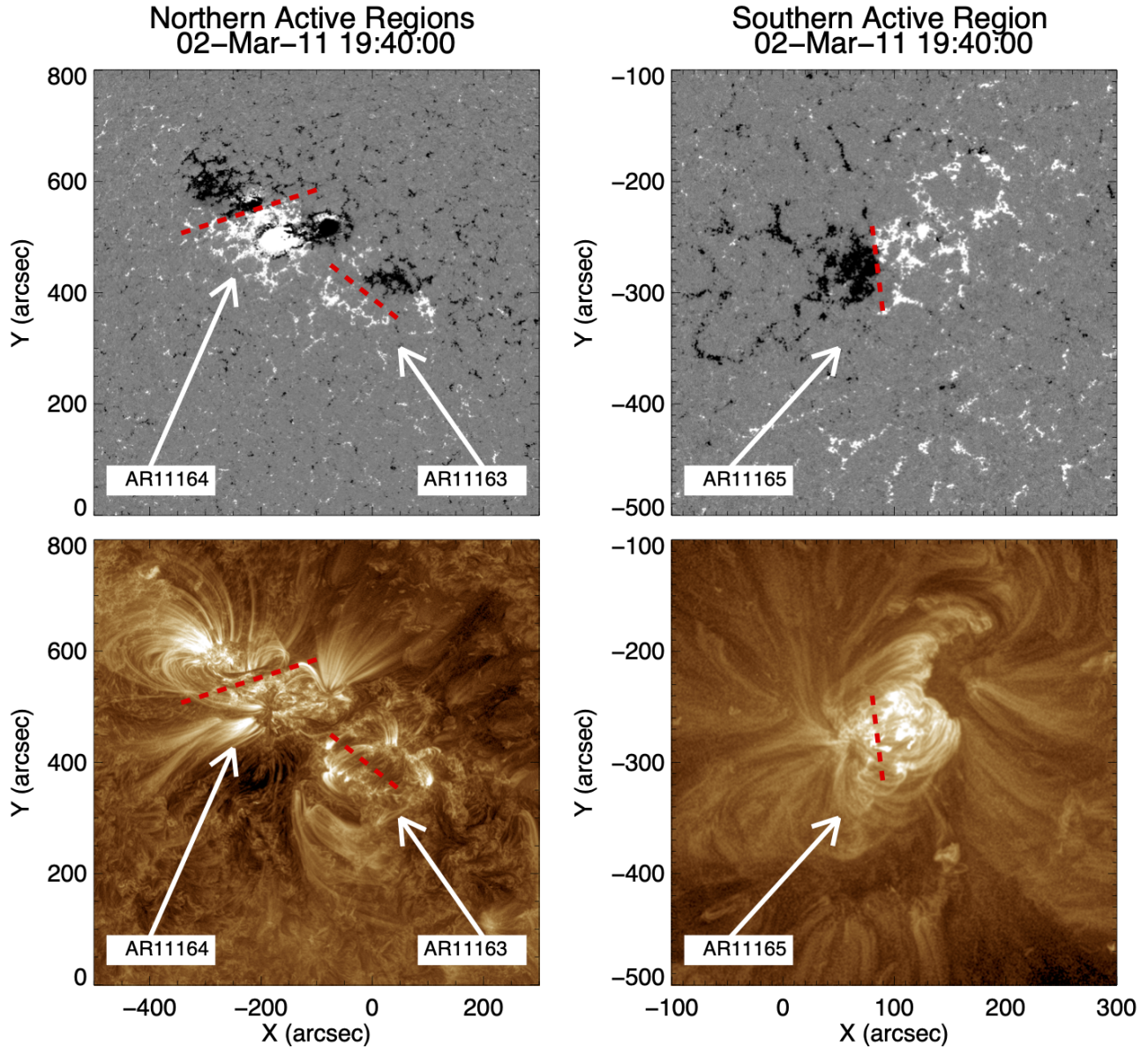


Figure 8. HMI (top two panels) and AIA 193 Å (bottom two panels) images of the northern complex formed by AR 11163 and 11164 (left two panels) and the stealth CME source region, AR 11165 (right two panels). The main PILs for each AR are indicated by the red dashed lines. They have been drawn by eye approximating the main PILs with straight lines.

4.2. The Three AR Complex Using a Cartesian Magnetic Field Model

Since the northern complex of ARs and the stealth CME source region are connected by transequatorial loops (see Section 3.4), we now investigate the magnetic connectivity between them. Because of the presence of moderate opposite magnetic shear in the three ARs, we

extrapolate the same HMI photospheric magnetogram used to model the coronal field of AR 11165 (Figure 9) under a potential field approach, using an area that encompasses both the northern and southern regions as the boundary condition. A Cartesian model at such a large size-scale is disputable, however, its use allows us to consider a single magnetogram including the three ARs with a higher spatial resolution (i.e. our non-uniform grid size

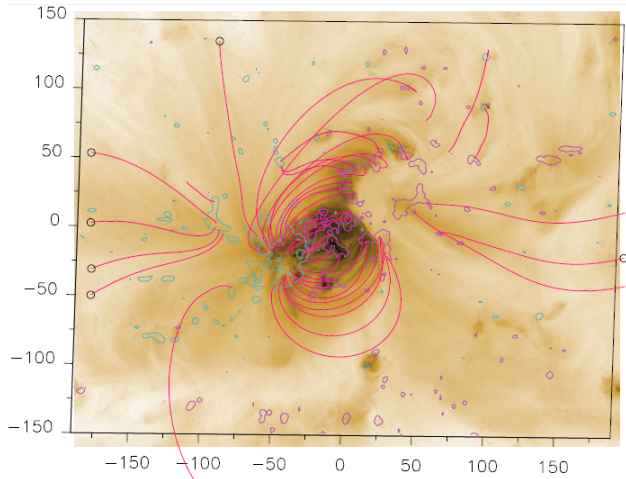


Figure 9. A LFFF model of AR 11165 for which we have used the line-of-sight HMI magnetogram shown in Figure 8 as boundary condition. Magnetic field contours at ± 50 , 200 G, positive (negative) shown in magenta (blue) color are overlaid on the AIA 193 Å image closer in time to the magnetogram. A set of computed field lines, matching the global shape of the observed coronal loops has been added in continuous red lines. The circles present at the end of some field lines indicate that these lines touch one of the lateral or the top sides of the numerical box used for the drawing (not the one used to compute the field). The axes in this panel are in Mm and the figure is shown from the observer’s point of view.

corresponds to HMI spatial resolution at the center of our computational box) and closer in time to the analysed events, reflecting more accurately the photospheric conditions. The results found in this section will be verified in Section 4.3 using a global model in spherical coordinates.

We searched for topological structures in the extrapolated model and found the presence of a magnetic null point to the north-west of AR 11165 (see Figure 10). The local field connectivity around a magnetic null can be described using the linear term of the Taylor expansion of the field around such a point (see Démoulin et al. 1994; Mandrini et al. 2014, 2015, and references therein). From the diagonalization of the Jacobian matrix of the field, we find three eigenvectors and the corresponding eigenvalues, which add up to zero to satisfy the field divergence-free condition. The eigenvalues are real for coronal conditions (a force-free field). A positive null point has two positive eigenvalues and conversely for a negative null. Figure 10 illustrates the location of a negative null point found at a height of 234 Mm above the photosphere ($1.34 R_{\odot}$ from Sun centre); this is indicated by the intersection of three segments that correspond to the directions of the three eigenvectors of the Jacobian matrix. These segments are colour coded to indicate

the magnitude of the corresponding eigenvalues. For a negative null, dark blue (light blue) corresponds to the highest (lowest) negative eigenvalue in the null fan plane and red to the null spine eigenvalue.

We trace sets of field lines in the neighbourhood of the null point, with starting positions in the direction of the three eigenvectors, to explore the different connectivity domains. This connectivity is illustrated in both panels of Figure 10. The left panel corresponds to the observer’s point of view along the Sun-Earth line, while the right panel shows the location of the null point as viewed from the solar south. The field lines in both panels have been drawn in blue and red to indicate what we envisioned could be the pre-reconnection set (blue field lines) and the post-reconnection set (red field lines), following the evolution of the emission structures and transequatorial loops discussed in Sections 3.2 and 3.4. The illustrated connectivity shows that the positive polarity of AR 11165 is connected to the dispersed negative polarity of AR 11163 and its negative polarity to the positive polarity of AR 11164. The footpoints of the field lines in AR 11165 are located in the vicinity of the twin EUV dimmings observed in association with the stealth CME, as shown in Figure 8 of O’Kane et al. (2019). The location of the dimming regions, their evolution over a 9 hour period and their relationship to the CMEs are discussed in detail in that article.

4.3. Global Magnetic Field Model

The magnetic null point found in the local Cartesian model could play a crucial role in facilitating the initiation of the stealth CME; therefore, we have searched for its presence in a global potential field source surface (PFSS) model, which could also give us clues about the location of ‘open’ field lines, their shape, and their possibility of channeling the stealth CME and influencing its propagation direction into the interplanetary (IP) medium. Because of the relevance of the role of this null point, we have checked the robustness of its presence using two different approaches to compute the PFSS global model.

Both PFSS models use as their lower boundary condition the HMI magnetic field synoptic map from Carrington rotation (CR) 2107, that ran from 16 February to 16 March 2011. HMI synoptic maps are computed from line-of-sight magnetograms by combining central meridian data from 20 magnetograms collected over a 4-hour interval. A synoptic map is made with the magnetograms collected over a full solar rotation (≈ 27.7 -day interval) with 3600×1440 steps in longitude and sine latitude. Both models assume that the magnetic field becomes purely radial at a

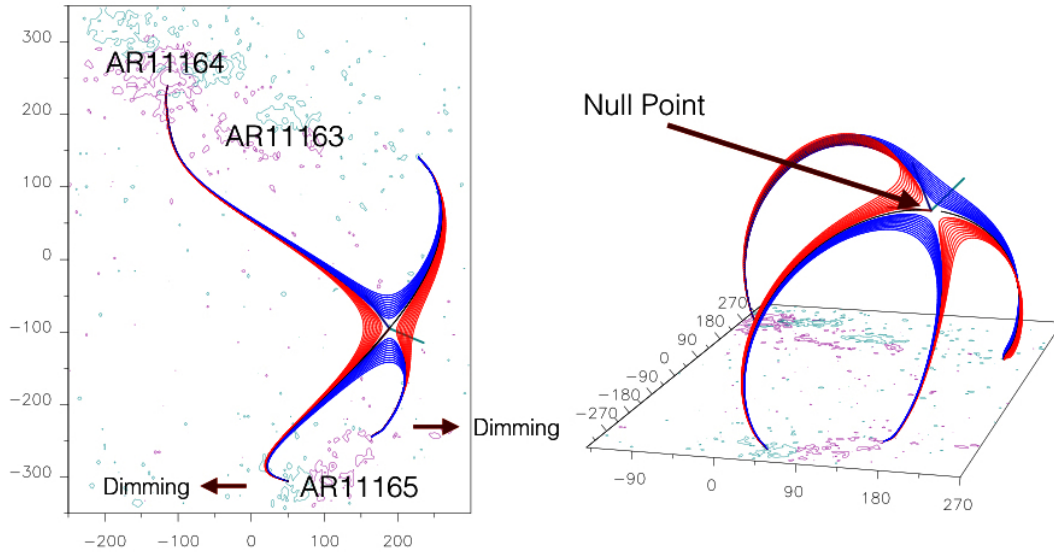


Figure 10. Coronal magnetic field model in the close vicinity of the magnetic null point found to the north-west of AR 11165. The left panel is drawn in the observer’s point of view, while the right panel is a view from the solar south. Field lines represent pre-reconnected (in blue colour) and post-reconnected ones (in red colour), as inferred from the observed evolution described in Sections 3.2 and 3.4 and our interpretation in Section 5. All axes are in Mm and the isocontours of the field correspond to $\pm 50, 200$ G in continuous magenta (blue) style for the positive (negative) values. The arrows point to the direction to which the dimming regions are observed to evolve, as shown in Figure 8 right panel in O’Kane et al. (2019).

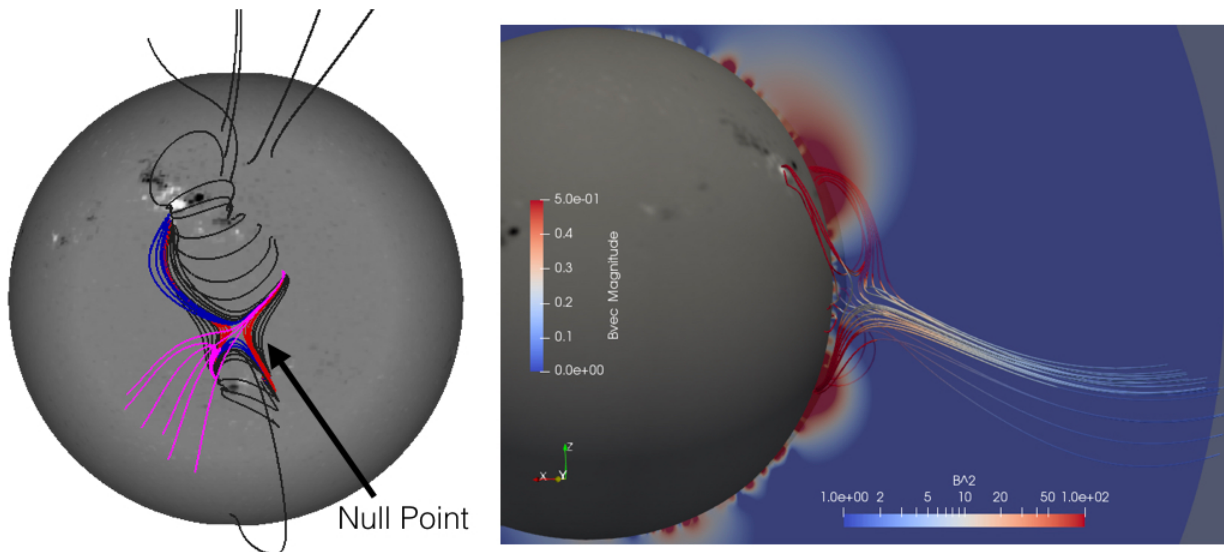


Figure 11. PFSS model of CR 2107. In the left panel, the magnetic field is computed with the FDIPS code. The null point is viewed when AR 11165 is numerically rotated to the central meridian. A set of field lines has been computed from its neighbourhood using the same blue and red convention as in Figure 10. These field lines show a similar connectivity as the ones in the Cartesian field model. Closed field lines are added in black mostly for context, while open ones are shown in pink. In the right panel, the model is computed using the pfssy code. We illustrate the connectivity surrounding the null point setting AR 11165 on the west limb. This shows the shape and direction of the ‘open’ field. The vertical coloured bar represents the magnitude of the field in Gauss along the field lines. The Python code also includes the computation of B^2 , within the slice passing through the centre of the null point (bottom right color scale).

height, called the source surface, which is set to the value $2.5 R_{\odot}$. Full details concerning the construction

of synoptic maps can be found in the HMI web-site (<http://jsoc.stanford.edu/jsocwiki/SynopticMaps>).

Our first PFSS modeling approach uses the Finite Difference Iterative Potential-Field Solver (FDIPS) code described by Tóth et al. (2011). The FDIPS code, which is freely available from the Center for Space Environment Modeling (CSEM) at the University of Michigan (<http://csem.engin.umich.edu/tools/FDIPS>), makes use of an iterative finite-difference method to solve the Laplace equation for the magnetic field. The spatial resolution of this particular model is 1° in longitude (360 longitudinal grid points), 0.11 in the sine of latitude (180 latitudinal grid points) and $0.01 R_\odot$ in the radial direction. We searched for a null point using a method similar to that discussed in the previous section but using a spherical geometry for the coronal field. Figure 11 left panel shows the location of a null point and the connectivity of the field when the Sun is rotated so that AR 11165 is facing the observer. This null point is located at a height of ≈ 118 Mm, lower than in the Cartesian model, but the connectivity clearly resembles the one of that model (Figure 10).

Our second approach uses the PFSS solver in Python (pfsspy, Yeates 2018; Stansby 2019). In this case we re-sampled the original field spatial resolution to a 540 and 270 pixels in longitude and latitude, respectively. This solver also uses finite differences, and follows the method in van Ballegooijen et al. (2000) to effectively compute discrete spherical harmonics global functions. We also found a magnetic null point at a similar location and with a similar connectivity in its neighbourhood as before, but at a height of ≈ 104 Mm. Therefore, though there are differences that come from the different approaches used, and different boundary conditions between the local and global models, the presence of this null point between the AR complex in the north and the stealth CME source region is consistent. Finally, both PFSS models suggest that there are ‘open’ field lines above the stealth CME source region that are inclined to the south (Figure 11, mainly the right panel).

The inclination of the ‘open’ field lines as well as the reaction of the surrounding potential field, present over AR 11165, may influence the CME propagation direction (e.g., Cremades et al. 2006; Gopalswamy et al. 2009). The erupting magnetic field is both compressing and bending the surrounding magnetic field. This induces a reactive force with both a gradient of magnetic pressure and a magnetic tension, with both forces proportional to B^2 . B^2 is seen to be higher above the two northern hemisphere ARs, lower in the region of the null point, and increases again over AR 11165 (see Figure 11). The CME is therefore likely to be influenced by B^2 present in the surrounding potential field, in agreement with previous studies (Gui et al. 2011; Kay

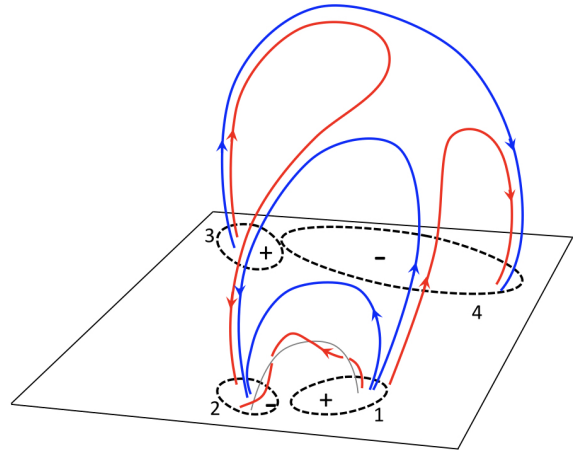


Figure 12. The sketch illustrates the scenario we propose for the origin of the stealth CME in Section 5. The erupting structure is drawn in red within AR 11165 (with footpoints in magnetic polarities 1 and 2). This structure is probably the result of the two episodes of two-ribbon formation occurring before the stealth CME. The blue field lines located above the erupting structure belong to the arcade which will reconnect at the null point with the set of blue field lines (for which we only show one) associated to the AR complex in the north (simplified to only include the relevant magnetic polarities as 3 and 4). This reconnection process will result in the set of two red field lines representing the transequatorial loops discussed in Section 3.4.

et al. 2013; Sieyra et al. 2020, and references therein) and be deflected southward contrary to the general equatorial deflection of many CMEs (Cremades and Bothmer 2004). The presence of open field lines, deflected towards the south, is also expected to deflect the CME along them (Mäkelä et al. 2013; Wang et al. 2020, and references therein).

5. CONCLUSIONS

This study analyses the stealth CME of 3 March 2011 and seeks to gain insight into the magnetic environment in which the eruption occurred. Detailed data analysis and the use of image processing techniques have revealed observational signatures of the evolution of the magnetic field toward eruption that are then interpreted in the framework of three potential magnetic field coronal models.

In summary, flux emergence dominates AR11165 in the lead up to the eruption, which appears to play a key role in creating the conditions sufficient for magnetic reconnection in the pre-existing arcade. Episodes of reconnection are evidenced by the observation of two-ribbon flares in the stealth CME source region (see Section 3.2). Two episodes of magnetic reconnection occur in the decayed sheared field above the emerging bipole

of AR 11165 forming the structure that later erupts as the stealth CME. All coronal models show a null point whose associated field lines connect AR11165 in the southern hemisphere and ARs 11163 and 11164 in the north. The presence of a coronal null point (and reconnection at this null) in the large scale field above the upper arcade of the pre-eruptive structure, which may be a flux rope, means that a rapidly decreasing field strength with height could enable the rope to become unstable in the hours after it is formed. Upon eruption, the stealth CME is deflected to the south, due to the ‘open’ field, and the overall variation in magnetic pressure. The eruption drives further reconnection at the null point creating new transequatorial loops that are observed in EUVI data.

In conclusion, our study supports the interpretation of stealth CMEs as a manifestation of normal solar eruptions, as opposed to belonging to a completely different class of solar phenomena. As events characterized by weak energetics, the magnetic structures associated to stealth CMEs seem to require a particular environment to successfully erupt, provided, in the case reported here, by a high-altitude null point. Future studies will investigate whether this is a general property of stealth CMEs.

ACKNOWLEDGMENTS

JO thanks the STFC for support via funding given in her PHD studentship and would like to thank IAFE and the UCL Research Catalyst Awards sponsored by Santander Universities for support during her visit to IAFE. LMG acknowledges support through a Royal Society University Research Fellowship. DML is grateful to the Science Technology and Facilities Council for the award of an Ernest Rutherford Fellowship (ST/R003246/1). CHM and CMC acknowledge financial support from the Argentine grants PICT 2016-0221 (ANPCyT) and UBACyT 20020170100611BA. CHM is a member of the Carrera del Investigador Científico of the Consejo Nacional de Investigaciones Científicas y Técnicas (CONICET). CMC is a fellow of CONICET. GV acknowledges the support from the European Union’s Horizon 2020 research and innovation programme under grant agreement No 824135 and of the STFC grant number ST/T000317/1. The authors thank the anonymous referee whose comments helped to improve the paper. SDO is a mission of NASA’s Living With a Star Program. STEREO is the third mission in NASA’s Solar Terrestrial Probes program. SOHO is a mission of international cooperation between ESA and NASA. The authors thank the SDO, STEREO, and SOHO teams for making their data publicly accessible. We recognise the collaborative and open nature of knowledge creation and dissemination, under the control of the academic community as expressed by Camille Noûs at <http://www.cogitamus.fr/indexen.html>.

REFERENCES

- Alzate, N. and Morgan, H. (2017), ‘Identification of low coronal sources of “stealth” coronal mass ejections using new image processing techniques’, *The Astrophysical Journal* **840**(2), 103.
- Bobra, M. G., Sun, X., Hoeksema, J. T., Turmon, M., Liu, Y., Hayashi, K., Barnes, G. and Leka, K. (2014), ‘The helioseismic and magnetic imager (hmi) vector magnetic field pipeline: Sharps–space-weather hmi active region patches’, *Solar Physics* **289**(9), 3549–3578.
- Byrne, J., Long, D., Gallagher, P., Bloomfield, D., Maloney, S., McAteer, R., Morgan, H. and Habbal, S. R. (2013), ‘Improved methods for determining the kinematics of coronal mass ejections and coronal waves’, *Astronomy & Astrophysics* **557**, A96.
- Cremades, H. and Bothmer, V. (2004), ‘On the three-dimensional configuration of coronal mass ejections’, *Astronomy & Astrophysics* **422**(1), 307–322.
- Cremades, H., Bothmer, V. and Tripathi, D. (2006), ‘Properties of structured coronal mass ejections in solar cycle 23’, *Advances in Space Research* **38**(3), 461–465.
- Démoulin, P., Bagalá, L. G., Mandrini, C. H., Hénoux, J. C. and Rovira, M. G. (1997), ‘Quasi-separatrix layers in solar flares. II. Observed magnetic configurations.’, *A&A* **325**, 305–317.
- Démoulin, P., Hénoux, J. C. and Mandrini, C. H. (1994), ‘Are magnetic null points important in solar flares?’, *A&A* **285**, 1023–1037.
- D’Huys, E., Seaton, D., Poedts, S. and Berghmans, D. (2014), ‘Observational characteristics of coronal mass ejections without low-coronal signatures’, *The Astrophysical Journal* **795**(1), 49.
- Fletcher, L., Pollock, J. A. and Potts, H. E. (2004), ‘Tracking of TRACE Ultraviolet Flare Footprints’, *SoPh* **222**(2), 279–298.

- Gopalswamy, N., Mäkelä, P., Xie, H., Akiyama, S. and Yashiro, S. (2009), 'CME interactions with coronal holes and their interplanetary consequences', *Journal of Geophysical Research (Space Physics)* **114**(A3), A00A22.
- Green, L. M., Kliem, B. and Wallace, A. (2011), 'Photospheric flux cancellation and associated flux rope formation and eruption', *Astronomy & Astrophysics* **526**, A2.
- Green, L. M., López fuentes, M. C., Mandrini, C. H., Démoulin, P., Van Driel-Gesztelyi, L. and Culhane, J. L. (2002), 'The Magnetic Helicity Budget of a cme-Prolific Active Region', *SoPh* **208**, 43–68.
- Green, L., Torok, T., Vrsnak, B., Manchester, I., Veronig, A. et al. (2018), 'The origin, early evolution and predictability of solar eruptions', *arXiv preprint arXiv:1801.04608*.
- Gui, B., Shen, C., Wang, Y., Ye, P., Liu, J., Wang, S. and Zhao, X. (2011), 'Quantitative Analysis of CME Deflections in the Corona', *SoPh* **271**(1-2), 111–139.
- Howard, R. A., Moses, J. D., Vourlidis, A., Newmark, J., Socker, D., Plunkett, S., Korendyke, C., Cook, J., Hurley, A., Davila, J. et al. (2008), 'Sun earth connection coronal and heliospheric investigation (secchi)', *Space Science Reviews* **136**(1-4), 67.
- Howard, T. A. and Harrison, R. A. (2013), 'Stealth coronal mass ejections: A perspective', *Solar Physics* **285**(1-2), 269–280.
- James, A., Green, L., Palmerio, E., Valori, G., Reid, H., Baker, D., Brooks, D., van Driel-Gesztelyi, L. and Kilpua, E. (2017), 'On-disc observations of flux rope formation prior to its eruption', *Solar Physics* **292**(5), 71.
- Kaiser, M. L., Kucera, T., Davila, J., Cyr, O. S., Guhathakurta, M. and Christian, E. (2008), 'The stereo mission: An introduction', *Space Science Reviews* **136**(1-4), 5–16.
- Kay, C., Opher, M. and Evans, R. M. (2013), 'Forecasting a Coronal Mass Ejection's Altered Trajectory: ForeCAT', *ApJ* **775**(1), 5.
- Kitahara, T. and Kurokawa, H. (1990), 'High-Resolution Observation and Detailed Photometry of a Great H α Two-Ribbon Flare', *SoPh* **125**(2), 321–332.
- Lemen, J. R., Akin, D. J., Boerner, P. F., Chou, C., Drake, J. F., Duncan, D. W., Edwards, C. G., Friedlaender, F. M., Heyman, G. F., Hurlburt, N. E. et al. (2011), The atmospheric imaging assembly (aia) on the solar dynamics observatory (sdo), in 'The Solar Dynamics Observatory', Springer, pp. 17–40.
- Lynch, B. J., Masson, S., Li, Y., DeVore, C. R., Luhmann, J., Antiochos, S. K. and Fisher, G. H. (2016), 'A model for stealth coronal mass ejections', *Journal of Geophysical Research: Space Physics* **121**(11).
- Ma, S., Attrill, G., Golub, L. and Lin, J. (2010), 'Statistical study of coronal mass ejections with and without distinct low coronal signatures', *The Astrophysical Journal* **722**(1), 289.
- Mäkelä, P., Gopalswamy, N., Xie, H., Mohamed, A. A., Akiyama, S. and Yashiro, S. (2013), 'Coronal Hole Influence on the Observed Structure of Interplanetary CMEs', *SoPh* **284**(1), 59–75.
- Mandrini, C. H., Baker, D., Démoulin, P., Cristiani, G. D., van Driel-Gesztelyi, L., Vargas Domínguez, S., Nuevo, F. A., Vásquez, A. M. and Pick, M. (2015), 'Parallel Evolution of Quasi-separatrix Layers and Active Region Upflows', *ApJ* **809**(1), 73.
- Mandrini, C. H., Démoulin, P., van Driel-Gesztelyi, L., Schmieder, B., Cauzzi, G. and Hofmann, A. (1996), '3D Magnetic Reconnection at an X-Ray Bright Point', *SoPh* **168**, 115–133.
- Mandrini, C. H., Schmieder, B., Démoulin, P., Guo, Y. and Cristiani, G. D. (2014), 'Topological Analysis of Emerging Bipole Clusters Producing Violent Solar Events', *SoPh* **289**(6), 2041–2071.
- Moore, R. L. and Labonte, B. J. (1980), The filament eruption in the 3B flare of July 29, 1973 - Onset and magnetic field configuration, in M. Dryer and E. Tandberg-Hanssen, eds, 'Solar and Interplanetary Dynamics', Vol. 91 of *IAU Symposium*, pp. 207–210.
- Morgan, H. and Druckmüller, M. (2014), 'Multi-scale gaussian normalization for solar image processing', *Solar physics* **289**(8), 2945–2955.
- Morgan, H., Habbal, S. R. and Woo, R. (2006), 'The depiction of coronal structure in white-light images', *Solar Physics* **236**(2), 263–272.
- Nitta, N. V. and Mulligan, T. (2017), 'Earth-affecting coronal mass ejections without obvious low coronal signatures', *Solar Physics* **292**(9), 125.
- O'Kane, J., Green, L., Long, D. M. and Reid, H. (2019), 'Stealth coronal mass ejections from active regions', *The Astrophysical Journal* **882**(2), 85.
- Palmerio, E., Kilpua, E. K., James, A. W., Green, L. M., Pomoell, J., Isavnin, A. and Valori, G. (2017), 'Determining the intrinsic cme flux rope type using remote-sensing solar disk observations', *Solar Physics* **292**(2), 39.

- Patsourakos, S., Vourlidas, A. and Stenborg, G. (2013), ‘Direct evidence for a fast coronal mass ejection driven by the prior formation and subsequent destabilization of a magnetic flux rope’, *The Astrophysical Journal* **764**(2), 125.
- Pesnell, W. D., Thompson, B. J. and Chamberlin, P. (2011), The solar dynamics observatory (sdo), in ‘The Solar Dynamics Observatory’, Springer, pp. 3–15.
- Pevtsov, A. and Balasubramaniam, K. (2003), ‘Helicity patterns on the sun’, *Advances in Space Research* **32**(10), 1867–1874.
- Qiu, J. (2009), ‘Observational Analysis of Magnetic Reconnection Sequence’, *ApJ* **692**(2), 1110–1124.
- Robbrecht, E., Patsourakos, S. and Vourlidas, A. (2009), ‘No trace left behind: Stereo observation of a coronal mass ejection without low coronal signatures’, *The Astrophysical Journal* **701**(1), 283.
- Scherrer, P. H., Schou, J., Bush, R., Kosovichev, A., Bogart, R., Hoeksema, J., Liu, Y., Duvall, T., Zhao, J., Schrijver, C. et al. (2012), ‘The helioseismic and magnetic imager (hmi) investigation for the solar dynamics observatory (sdo)’, *Solar Physics* **275**(1-2), 207–227.
- Sieyra, M. V., Cécere, M., Cremades, H., Iglesias, F. A., Sahade, A., Mierla, M., Stenborg, G., Costa, A., West, M. J. and D’Huys, E. (2020), ‘Analysis of large deflections of prominence–cme events during the rising phase of solar cycle 24’, *Solar Physics* **295**(9), 1–29.
- Stansby, D. (2019), ‘dstansby/pfsspy: pfsspy 0.1.2’.
URL: <https://doi.org/10.5281/zenodo.2566462>
- Tóth, G., van der Holst, B. and Huang, Z. (2011), ‘Obtaining Potential Field Solutions with Spherical Harmonics and Finite Differences’, *ApJ* **732**(2), 102.
- van Ballegooijen, A. A., Priest, E. R. and Mackay, D. H. (2000), ‘Mean field model for the formation of filament channels on the sun’, *ApJ* **539**(2), 983–994.
URL: <https://ui.adsabs.harvard.edu/abs/2000ApJ...539..983V>
- Vourlidas, A. and Webb, D. F. (2018), ‘Streamer-blowout coronal mass ejections: Their properties and relation to the coronal magnetic field structure’, *The Astrophysical Journal* **861**(2), 103.
- Wang, J., Hoeksema, J. T. and Liu, S. (2020), ‘The deflection of coronal mass ejections by the ambient coronal magnetic field configuration’, *Journal of Geophysical Research: Space Physics* **125**(8), e2019JA027530.
- Webb, D. F. and Howard, T. A. (2012), ‘Coronal mass ejections: observations’, *Living Reviews in Solar Physics* **9**(1), 3.
- Yeates, A. (2018), ‘First release of pfss code.’.
URL: <https://doi.org/10.5281/zenodo.1472183>