



**HAL**  
open science

## The wind and the magnetospheric accretion onto the T Tauri star S Coronae Australis at sub-au resolution

R. Garcia Lopez, K. Perraut, A. Caratti O Garatti, B. Lazareff, J. Sanchez-Bermudez, M. Benisty, C. Dougados, L. Labadie, W. Brandner, J. Garcia, et al.

### ► To cite this version:

R. Garcia Lopez, K. Perraut, A. Caratti O Garatti, B. Lazareff, J. Sanchez-Bermudez, et al.. The wind and the magnetospheric accretion onto the T Tauri star S Coronae Australis at sub-au resolution. *Astronomy & Astrophysics - A&A*, 2017, 608, pp.A78. 10.1051/0004-6361/201731058 . obspm-02190736

**HAL Id: obspm-02190736**

**<https://hal-obspm.ccsd.cnrs.fr/obspm-02190736v1>**

Submitted on 13 Oct 2020

**HAL** is a multi-disciplinary open access archive for the deposit and dissemination of scientific research documents, whether they are published or not. The documents may come from teaching and research institutions in France or abroad, or from public or private research centers.

L'archive ouverte pluridisciplinaire **HAL**, est destinée au dépôt et à la diffusion de documents scientifiques de niveau recherche, publiés ou non, émanant des établissements d'enseignement et de recherche français ou étrangers, des laboratoires publics ou privés.

# The wind and the magnetospheric accretion onto the T Tauri star S Coronae Australis at sub-au resolution

GRAVITY Collaboration<sup>\*</sup>: R. Garcia Lopez<sup>1,2</sup>, K. Perraut<sup>3</sup>, A. Caratti o Garatti<sup>1,2</sup>, B. Lazareff<sup>3</sup>, J. Sanchez-Bermudez<sup>1</sup>, M. Benisty<sup>3,13</sup>, C. Dougados<sup>3</sup>, L. Labadie<sup>4</sup>, W. Brandner<sup>1</sup>, P. J. V. Garcia<sup>5,6</sup>, Th. Henning<sup>1</sup>, T. P. Ray<sup>2</sup>, R. Abuter<sup>7</sup>, A. Amorim<sup>6</sup>, N. Anugu<sup>6</sup>, J. P. Berger<sup>7,3</sup>, H. Bonnet<sup>7</sup>, A. Buron<sup>8</sup>, P. Caselli<sup>8</sup>, Y. Clénet<sup>9</sup>, V. Coudé du Foresto<sup>9</sup>, W. de Wit<sup>10</sup>, C. Deen<sup>8</sup>, F. Delplancke-Ströbele<sup>7</sup>, J. Dexter<sup>8</sup>, A. Eckart<sup>4,11</sup>, F. Eisenhauer<sup>8</sup>, C. E. Garcia Dabo<sup>7</sup>, E. Gendron<sup>9</sup>, R. Genzel<sup>8,12</sup>, S. Gillessen<sup>8</sup>, X. Hauboys<sup>10</sup>, M. Haug<sup>8,7</sup>, F. Hausmann<sup>8</sup>, S. Hippler<sup>1</sup>, Z. Hubert<sup>1,9</sup>, C. A. Hummel<sup>7</sup>, M. Horrobin<sup>4</sup>, L. Jocou<sup>3</sup>, S. Kellner<sup>8,11</sup>, P. Kervella<sup>9,13</sup>, M. Kulas<sup>1</sup>, J. Kolb<sup>10</sup>, S. Lacour<sup>9</sup>, J.-B. Le Bouquin<sup>3</sup>, P. Léna<sup>9</sup>, M. Lippa<sup>8</sup>, A. Mérand<sup>7</sup>, E. Müller<sup>1,10</sup>, T. Ott<sup>8</sup>, J. Panduro<sup>1</sup>, T. Paumard<sup>9</sup>, G. Perrin<sup>9</sup>, O. Pfuhl<sup>8</sup>, A. Ramirez<sup>7</sup>, C. Rau<sup>8</sup>, R.-R. Rohloff<sup>1</sup>, G. Rousset<sup>9</sup>, S. Scheithauer<sup>1</sup>, M. Schöller<sup>7</sup>, C. Straubmeier<sup>4</sup>, E. Sturm<sup>8</sup>, W. F. Thi<sup>8</sup>, E. van Dishoeck<sup>8,14</sup>, F. Vincent<sup>9</sup>, I. Waisberg<sup>8</sup>, I. Wank<sup>4</sup>, E. Wieprecht<sup>8</sup>, M. Wiest<sup>4</sup>, E. Wiezorrek<sup>8</sup>, J. Woillez<sup>7</sup>, S. Yazici<sup>8,4</sup>, and G. Zins<sup>10</sup>

<sup>1</sup> Max Planck Institute for Astronomy, Königstuhl 17, 69117 Heidelberg, Germany  
e-mail: rgarcia@cp.dias.ie

<sup>2</sup> Dublin Institute for Advanced Studies, 31 Fitzwilliam Place, D02 XF86 Dublin, Ireland

<sup>3</sup> University Grenoble Alpes, CNRS, IPAG, 38000 Grenoble, France  
e-mail: karine.perraut@univ-grenoble-alpes.fr

<sup>4</sup> I. Physikalisches Institut, Universität zu Köln, Zùlpicher Str. 77, 50937 Köln, Germany

<sup>5</sup> Universidade do Porto – Faculdade de Engenharia, Rua Dr. Roberto Frias, 4200-465 Porto, Portugal

<sup>6</sup> CENTRA, Instituto Superior Tecnico, Av. Rovisco Pais, 1049-001 Lisboa, Portugal

<sup>7</sup> European Southern Observatory, Karl-Schwarzschild-StraÙe 2, 85748 Garching, Germany

<sup>8</sup> Max Planck Institute for Extraterrestrial Physics, Giessenbachstrasse, 85741 Garching bei München, Germany

<sup>9</sup> LESIA, Observatoire de Paris, PSL Research University, CNRS, Sorbonne Universités, UPMC University Paris 06, University Paris Diderot, Sorbonne Paris Cité, 75005 Paris, France

<sup>10</sup> European Southern Observatory, Casilla 19001, Santiago 19, Chile

<sup>11</sup> Max-Planck-Institute for Radio Astronomy, Auf dem Hügel 69, 53121 Bonn, Germany

<sup>12</sup> Department of Physics, Le Conte Hall, University of California, Berkeley, CA 94720, USA

<sup>13</sup> Unidad Mixta Internacional Franco-Chilena de Astronomía (CNRS UMI 3386), Departamento de Astronomía, Universidad de Chile, Camino El Observatorio 1515, Las Condes, 1058 Santiago, Chile

<sup>14</sup> Sterrewacht Leiden, Leiden University, Postbus 9513, 2300 RA Leiden, The Netherlands

Received 27 April 2017 / Accepted 5 September 2017

## ABSTRACT

**Aims.** To investigate the inner regions of protoplanetary discs, we performed near-infrared interferometric observations of the classical T Tauri binary system S CrA.

**Methods.** We present the first VLTI-GRAVITY high spectral resolution ( $R \sim 4000$ ) observations of a classical T Tauri binary, S CrA (composed of S CrA N and S CrA S and separated by  $\sim 1''/4$ ), combining the four 8m telescopes in dual-field mode.

**Results.** Our observations in the near-infrared  $K$ -band continuum reveal a disc around each binary component, with similar half-flux radii of about 0.1 au at  $d \sim 130$  pc, inclinations ( $i = 28 \pm 3^\circ$  and  $i = 22 \pm 6^\circ$ ), and position angles (PA =  $0^\circ \pm 6^\circ$  and PA =  $-2^\circ \pm 12^\circ$ ), suggesting that they formed from the fragmentation of a common disc. The S CrA N spectrum shows bright He I and Bry line emission exhibiting inverse P Cygni profiles, typically associated with infalling gas. The continuum-compensated Bry line visibilities of S CrA N show the presence of a compact Bry emitting region whose radius is about  $\sim 0.06$  au, which is twice as big as the truncation radius. This component is mostly tracing a wind. Moreover, a slight radius change between the blue- and red-shifted Bry line components is marginally detected.

**Conclusions.** The presence of an inverse P Cygni profile in the He I and Bry lines, along with the tentative detection of a slightly larger size of the blue-shifted Bry line component, hint at the simultaneous presence of a wind and magnetospheric accretion in S CrA N.

**Key words.** stars: formation – circumstellar matter – ISM: jets and outflows – ISM: individual objects: S CrA – infrared: ISM – techniques: interferometric

\* GRAVITY is developed in a collaboration by the Max Planck Institute for Extraterrestrial Physics, LESIA of Paris Observatory and IPAG of Université Grenoble Alpes/CNRS, the Max Planck Institute for Astronomy, the University of Cologne, the Centro Multidisciplinar de Astrofísica Lisbon and Porto, and the European Southern Observatory.

## 1. Introduction

The physical structure and processes acting in the inner regions of protoplanetary discs are still poorly constrained, yet they are key elements for understanding disc dynamics and evolution. In this region, accretion flows, winds, and outflows are essential in order to control angular momentum, alter the gas content, and drive the dynamics of the gas (see e.g. Alexander et al. 2014). While spectroscopic studies can bring some constraints to these processes, only spatially resolved observations with milliarcsecond (mas) resolution, that is, on sub-astronomical unit (au) scale for the nearest star forming regions, can discriminate between competing models.

In the past decade, near-infrared (NIR) interferometers have successfully resolved the inner regions of circumstellar discs around young stars. Detailed studies of individual objects were done through observations of the dust traced by the continuum emission (Tannirkulam et al. 2008; Benisty et al. 2010; Kraus et al. 2013) or of the hot and warm gas components through hydrogen recombination and CO vibrational lines (Tatulli et al. 2007; Eisner et al. 2007; Kraus et al. 2008). The first statistical analysis of the dust has recently been carried out with the advent of the four-telescope *H*-band instrument PIONIER at the Very Large Telescope Interferometer (VLTI). This survey showed that the sublimation front is in general rather smooth and wide, in agreement with the presence of multiple grain populations, and that its thickness is larger than predicted by hydrostatic models (Anthonioz et al. 2015; Lazareff et al. 2017).

However, observations of the gaseous disc component are more challenging and they have so far been restricted to a handful of bright and/or highly accreting sources (e.g. Kraus et al. 2008; Eisner et al. 2014; Garcia Lopez et al. 2015; Caratti o Garatti et al. 2015). In this context, the H I Bry line has been the focus of most of the interferometric studies performed in the *K* band so far to trace the hot inner gas, and thus, the physical processes taking place within the inner disc region. These studies, mainly focused on Herbig stars, have shown that in most cases the Bry line originates from a very compact region located well within the dust sublimation radius. Despite its small angular size (a few tenths of mas), most of the detailed individual studies associate the origin of this line with a wind or the hot layers of a circumstellar disc rather than with magnetospheric accretion (Weigelt et al. 2011; Ellerbroek et al. 2014; Mendigutía et al. 2015; Garcia Lopez et al. 2015, 2016; Caratti o Garatti et al. 2015). Results from these highly irradiated discs are, however, probably not representative of the bulk of the young stellar object (YSO) population, and in particular of the Classical T Tauri stars (CTTSs), which have much lower stellar temperatures than their higher mass counterparts, the Herbig Ae/Be stars. By modelling spatially and spectrally ( $R \sim 2000$ ) resolved Bry line profiles of CTTSs, Eisner et al. (2010) suggest that the H I gas mostly traces infalling columns of material, although some emission might also originate from compact regions of outflowing winds.

In this paper, we present the first interferometric observations of a CTTS obtained in the *K* band with GRAVITY, the second generation beam combiner at the VLTI (Eisenhauer et al. 2011; Gravity Collaboration et al. 2017), and a spectral resolution of  $R \sim 4000$ . We observed the binary system S CrA located at a distance of  $\sim 130$  pc (Prato et al. 2003; Neuhäuser & Forbrich 2008), with a separation of  $\sim 1''.4$  and a PA of  $157^\circ$  (Reipurth & Zinnecker 1993; Prato et al. 2003). Both sources are CTTSs and they appear coeval

(Prato et al. 2003; Petrov et al. 2014). Due to the high veiling measured in both objects, the spectral types are uncertain ranging from G to M (Prato et al. 2003; Carmona et al. 2007; Petrov et al. 2014). Both stars are strong accretors. They possess flared discs and a remnant envelope, as suggested by Herschel observations (Sicilia-Aguilar et al. 2013). The system is still very active and associated with HH 82 (PA  $\sim 95^\circ$ ) and HH 729 (PA  $\sim 115^\circ$ , see Wang et al. 2004; Kumar et al. 2011; Peterson et al. 2011).

S CrA was classified early on as one of the brightest examples of the YY Ori objects, a class of pre-main sequence stars, first identified by Walker (1972). These objects show a broad red-shifted absorption component (inverse P Cygni profile) on the wings of selected emission lines, indicating infalling gas at velocities larger than  $100 \text{ km s}^{-1}$ . Several detailed spectroscopic studies of the optical H I lines in S CrA are reported in the literature (see e.g. Bertout et al. 1982; Appenzeller et al. 1986; Krautter et al. 1990). In particular, Krautter et al. (1990) favour the model of magnetospheric accretion for the origin of these red-shifted absorption features.

We first describe the GRAVITY observations and data processing (Sect. 2), then the spectroscopic and interferometric results (Sect. 3). We interpret them using geometric models applied to the continuum and the Bry line (Sect. 4). Finally, all findings are discussed in Sect. 5.

## 2. Observations and data reduction

The binary system S CrA was observed in two runs (20 July and 16 August 2016, see Table 1) with the VLTI instrument GRAVITY, using the four 8 m Unit Telescopes (UTs) of the European Southern Observatory and recording interferograms on six baselines simultaneously. The observations were performed in dual-field mode swapping between the North (S CrA N) and South (S CrA S) components of the binary system. This allowed us to alternate each of the binary components on the fringe tracker (FT) and science (SC) detectors.

The visibilities and closure phases for the FT detector are recorded at low spectral resolving power ( $R \sim 23$ , e.g. five spectral channels over the *K* band) with the FT working at 1 kHz and allowing the atmospheric effects on the fringe patterns to be frozen. On the other hand, the SC detector was set at high spectral resolution (HR;  $R \sim 4000$ , i.e., a radial velocity (RV) resolution of  $\Delta RV \sim 70 \text{ km s}^{-1}$ ) in the combined polarization mode. More details about the GRAVITY instrument and observing modes can be found in Gravity Collaboration et al. (2017). A detailed log of the observations is presented in Table 1.

The data were reduced using the GRAVITY data reduction Software v0.9 (Lapeyriere et al. 2014). To calibrate the atmospheric transfer function the calibrators HD 188787 and HD 176047 were also observed with GRAVITY in single-field mode (Table 1) at the same airmass as the scientific target. To obtain the spectra of S CrA N and S CrA S, we performed an average of the HR spectrum recorded in each of the four photometric channels. The calibrators were also used as telluric standards after removing the intrinsic photospheric absorption features present in their spectra and dividing them by a black body at the appropriate temperature. The telluric corrected spectra of S CrA N and S CrA S were then flux calibrated assuming *K*-band magnitudes of 6.6 and 7.3, respectively (Prato et al. 2003). The wavelength calibration of the GRAVITY spectra was refined using the many telluric features present in the whole *K* band, obtaining an average shift of  $\sim 3 \text{ \AA}$ . The residual uncertainty is about  $1\text{--}1.5 \text{ \AA}$  or  $\sim 14\text{--}20 \text{ km s}^{-1}$ .

**Table 1.** Observation log of the VLTI/GRAVITY high-resolution ( $R \sim 4000$ ) observations of S CrA North and South conducted with the UTs.

UT Date	Tot. Int. S CrA N [s]	Tot. Int. S CrA S [s]	DIT <sup>a</sup> [s]	NDIT <sup>b</sup> #	Proj. baselines [m]	PA <sup>c</sup> [°]	Calibrator	UD diameter <sup>d</sup> [mas]
2016-07-20	2100	600	60	5	42, 52, 60, 81, 93, 115	53, 38, 130, 100, 45, 76	HD 188787	$0.252 \pm 0.018$
2016-08-16	1200	1200	60	5	47, 56, 59, 87, 102, 130	31, 18, 100, 70, 24, 50	HD 176047	$0.309 \pm 0.021$

**Notes.** <sup>(a)</sup> Detector integration time per interferogram. <sup>(b)</sup> Number of interferograms. <sup>(c)</sup> Baseline position angle from the shortest to longest baseline. <sup>(d)</sup> The calibrator uniform-disc (UD) diameter ( $K$  band) was taken from [Lafrasse et al. \(2010\)](#).

The weather conditions in the August run were not optimal and thus the signal-to-noise ratio of the HR science observations was much worse than that of the July run. Therefore, while we can use all the FT low-resolution datasets to fit the continuum of each binary system component (Sect. 4.1), we can only use the July HR observations of S CrA N to model the Bry line emitting region of this component (Sect. 4.2). The spectro-interferometric data for S CrA S around the Bry line have a poor signal-to-noise ratio even in the July run and therefore they are only displayed in the Appendix and could not be examined further. Finally, even with the good-quality July dataset of S CrA N, we were not able to retrieve differential interferometric signals across the He I line (Sect. 3.1), because of its small line-to-continuum ratio ( $<10\%$ ).

### 3. Results

VLTI-GRAVITY observations allow us to obtain the  $K$ -band spectra (from  $\sim 2.0 \mu\text{m}$  to  $\sim 2.5 \mu\text{m}$ ), as well as six spectrally dispersed visibility amplitudes and differential phases, and three closure phase measurements.

#### 3.1. Spectrum of each component

The full  $K$ -band spectrum of S CrA N is shown in Fig. 1-top. It displays bright He I  $2.06 \mu\text{m}$  and Bry emission, as well as a faint Na I doublet (at  $2.206$  and  $2.209 \mu\text{m}$ ) and H I Pfund (24–20) emission lines. These lines are usually found in the spectra of actively accreting CTTSs. Interestingly, the line profile of the He I line and, marginally, that of the Bry line show an inverse P Cygni line profile with the red-shifted absorption component at radial velocities of  $400 \pm 50 \text{ km s}^{-1}$  and  $300 \pm 100 \text{ km s}^{-1}$ , respectively. This feature is usually associated with infalling gas located in magnetospheric accretion columns ([Edwards et al. 2006](#); [Kurosawa et al. 2011](#)). Notably, the red-shifted absorption features of the H I Balmer lines were detected at  $220\text{--}270 \text{ km s}^{-1}$ , extending out to  $350\text{--}400 \text{ km s}^{-1}$  (see [Bertout et al. 1982](#); [Krautter et al. 1990](#)).

Moreover, the Bry line displays a double-peaked asymmetric profile with radial velocities of  $\sim 0 \text{ km s}^{-1}$  and  $\sim 360 \pm 40 \text{ km s}^{-1}$ , where the blue-shifted component is likely tracing a high-velocity jet or wind.

The  $K$ -band spectrum of S CrA S (Fig. 1-bottom) also exhibits a double-peaked and inverse P Cygni Bry line and several photospheric absorption lines (Al I  $2.110\text{--}2.117$ ), Na I ( $2.207\text{--}2.209$ ), Ca I ( $2.226\text{--}2.227$ ), and CO bandheads ( $2.29\text{--}2.4$ ), indicative of a late-type star (K late or early M).

#### 3.2. Continuum visibilities of both components

The dual-field mode swapping between the North and South components of the binary system allows us to measure and compare the continuum visibilities recorded with both FT and SC detectors. Good agreement at a level better than 5% was found

between the calibrated continuum visibilities measured on the FT and SC detectors in July. Hereafter, we use the FT datasets to fit the continuum of both components (Sect. 4.1). The FT square visibility values are shown in Fig. 2.

#### 3.3. Spectro-differential visibilities, phases, and closure phases of S CrA N

Figure 3 displays all the interferometric observables around the Bry line. The spectrally dispersed visibilities increase in the Bry line relative to the continuum for all the baselines, indicating that the Bry emission originates in a region more compact than the continuum emitting region. Similar results were found in previous spectro-interferometric studies of Herbig Ae/Be stars, as well as classical T Tauri sources (see e.g. [Kraus et al. 2008](#); [Eisner et al. 2014](#); [Caratti o Garatti et al. 2015](#); [Garcia Lopez et al. 2015](#); [Kurosawa et al. 2016](#)).

Interestingly, our results show a slight displacement of the peak of the total visibilities within the Bry line with respect to the peak of the line (see the dotted vertical line in Fig. 3) and a change in the shape of the visibilities from baseline to baseline. This suggests the presence of different physical structures in the environment of S CrA N with different kinematic signatures. It should be mentioned, however, that the shift in the peaks of the visibilities within the Bry line is of the order of a few tens of  $\text{km s}^{-1}$ ; that is, the shifts are smaller than the spectral resolution of our GRAVITY observations.

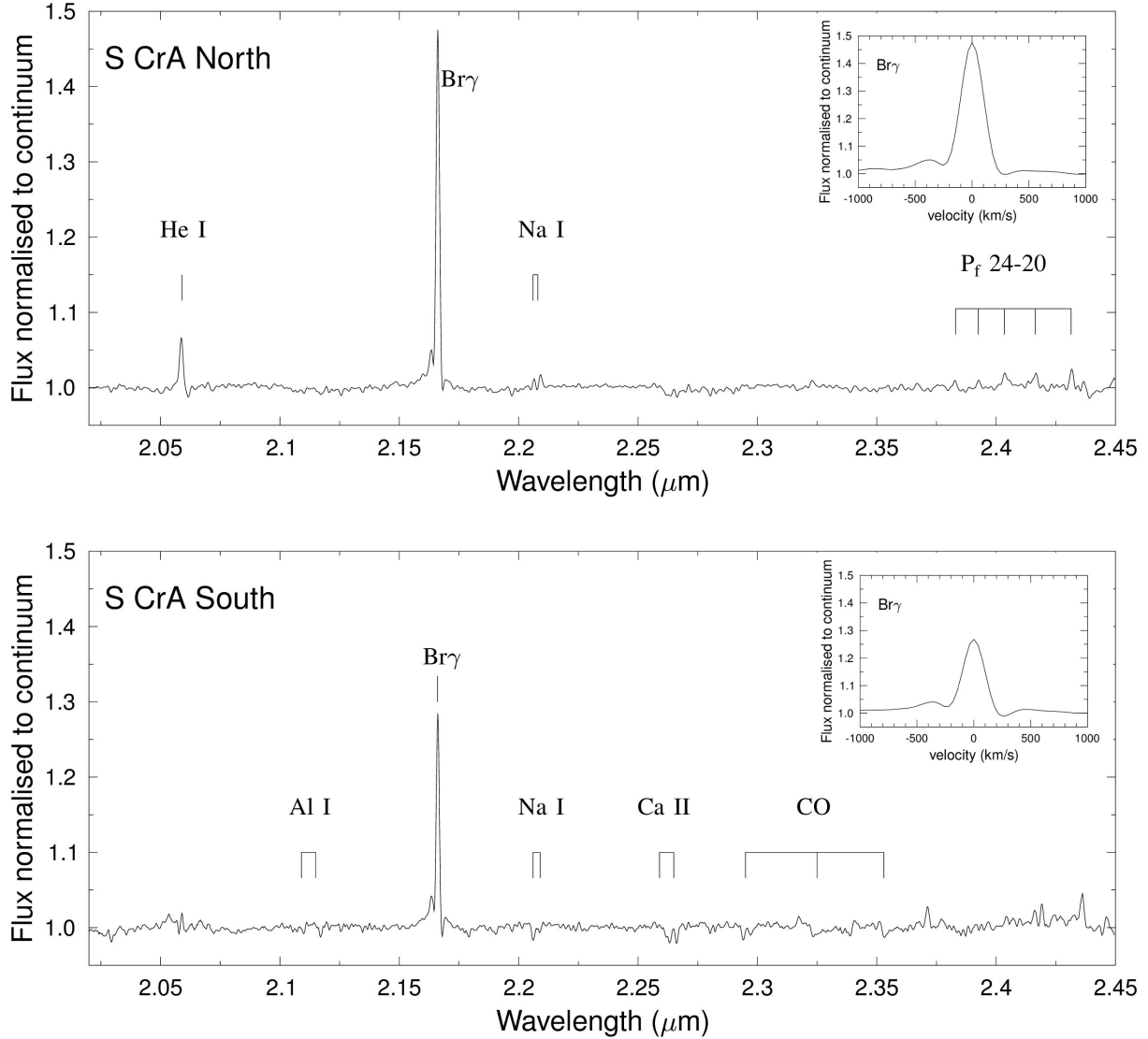
Mean closure phases of  $\sim 2^\circ$  are present in the largest telescope triplets (UT1-UT3-UT4, UT2-UT3-UT4 and UT1-UT2-UT4), hinting to a slightly asymmetric continuum. This observation agrees well with the absolute closure phase signal of  $2.73^\circ \pm 2.5^\circ$  previously detected in the PIONIER  $H$ -band observations of S CrA N ([Anthonioz et al. 2015](#)). Moreover, this closure phase signal decreases across the Bry line for the UT1-UT3-UT4 triplet. Even if the dispersion of the signal (of about  $1^\circ$  peak-to-valley) does not allow further conclusions, this might indicate a first detection of an asymmetry in the innermost regions of a CTTS.

#### 3.4. Continuum-compensated Bry line visibilities of S CrA N

Continuum-compensated (or pure line) visibilities can be derived by considering that the visibilities across the Bry line have contributions from the line emitting component and from the continuum component. In this case, following the method described in [Weigelt et al. \(2007\)](#), the Bry line continuum-compensated visibility can be derived from

$$V_{\text{Bry}} = \frac{\sqrt{|F_{\text{tot}} V_{\text{tot}}|^2 + |F_{\text{cont}} V_{\text{cont}}|^2 - 2 F_{\text{tot}} V_{\text{tot}} F_{\text{cont}} V_{\text{cont}} \cos \phi}}{F_{\text{line}}}, \quad (1)$$

where  $F_{\text{tot}} = F_{\text{cont}} + F_{\text{line}}$ ,  $F_{\text{line}}$ , and  $F_{\text{cont}}$  are the total, the line, and the continuum fluxes;  $V_{\text{cont}}$  and  $V_{\text{tot}}$  are the estimated



**Fig. 1.** GRAVITY observations of S CrA taken during the July campaign showing the spectra of S CrA North (*top*) and South (*bottom*). Insets display the velocity calibrated Br $\gamma$  line profiles.

continuum visibility and the observed total visibility, respectively; and  $\phi$  is the differential phase measured within the line.

Our GRAVITY HR observations allow us to measure the pure Br $\gamma$  line visibilities for six spectral channels, namely those with a line-to-continuum ratio higher than 10% (see Fig. 4). Therefore our analysis includes the main spectral component, but unfortunately excludes the high-velocity components. The continuum-compensated Br $\gamma$  visibilities reveal a change in behaviour from the shortest to the longest baselines. For the three shortest baselines, both blue- and red-shifted line components are unresolved ( $V \sim 1$ ). The three longest baselines resolve at least one of the two components ( $V < 1$ ); the blue-shifted component is more extended than the red-shifted one for the 81 m and 93 m projected baselines, whereas the opposite is observed for the 115 m projected baseline.

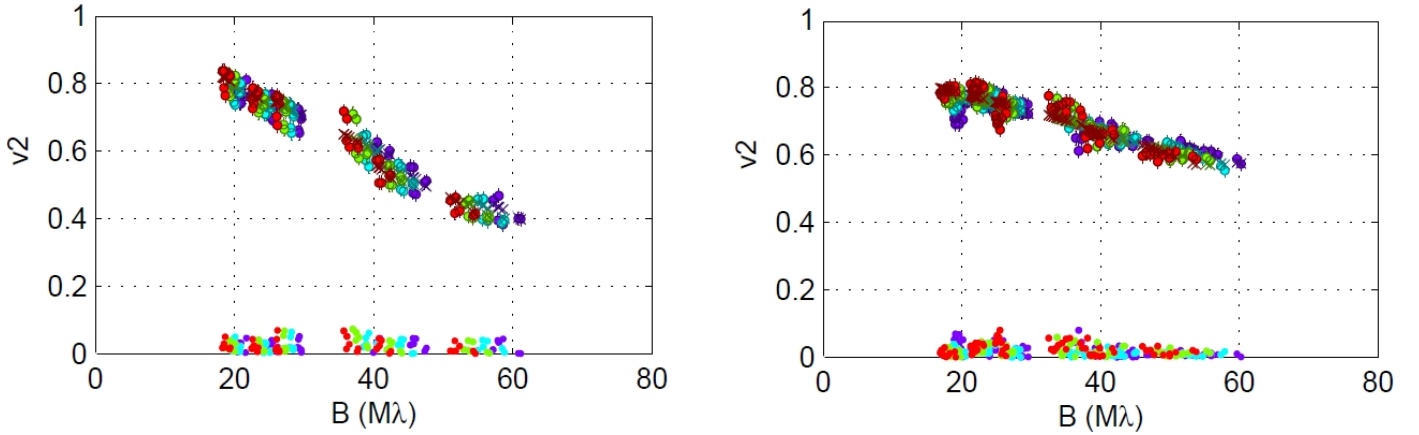
## 4. Modelling

### 4.1. K-band continuum of S CrA North and South

We used the modelling tool developed for the PIONIER instrument to fit the FT data on both components of the binary system

(for further modelling details refer to Lazareff et al. 2017). The effective temperature and photospheric index  $k_s$  at the central wavelength of the K-band for each of the S CrA components were taken from Pecaut & Mamajek (2013), assuming spectral types of G0 and K0 for the North and South components, respectively.

The visibility values at the shortest baseline, especially for the South component (see Fig. 2), cannot be described by a pure Gaussian radial profile, but is described better for example by a Gaussian plus a halo component or a Lorentzian profile. In this case, we have focused our analysis on Gaussian plus halo fitting to be consistent with the Br $\gamma$  analysis (see Sect. 4.2). The continuum visibilities were then fitted by assuming a linear combination of the stellar component (unresolved at all the baselines), a halo (fully resolved at all baselines), and a circumstellar component, with the flux fraction of each component ( $f_s$ ,  $f_h$ , and  $f_c$  respectively) as the combination coefficients. The free fitting parameters are therefore two flux fractions among  $f_s$ ,  $f_h$ ,  $f_c$  (since the sum of the three fractions equals 1), the spectral index of the circumstellar environment  $k_c$  over the K band, the inclination  $i$ , the projected angle PA (with respect to the major axis of the disc, with north up and east to the left), and  $a$ , the angular



**Fig. 2.** Squared visibility ( $V^2$ ) vs. projected baseline in units of  $10^6 \lambda$  for four FT spectral channels from our GRAVITY+UT observations of S CrA North (*left panel*) and South (*right panel*). The data and best fitting model are represented by filled symbols and crosses, respectively. The absolute value of the fit residuals is shown at the *bottom of each panel*. Different colours indicate different spectral channels.

**Table 2.** Parameters derived from the best fit of the FT continuum data for both S CrA components (see Fig. 2).

SCrA	Sp. Type	$T_{\text{eff}}$ [K]	$k_s$	$k_c$	$f_s$	$f_h$	$f_c$	$i$ [°]	PA <sup>a</sup> [°]	$a$ [mas]	$a$ [au]
North	G0	5920	1.35	$-3.73 \pm 1.27$	$0.30 \pm 0.04$	$0.06 \pm 0.01$	$0.64 \pm 0.04$	$28 \pm 3$	$0 \pm 6$	$0.83 \pm 0.04$	$0.108 \pm 0.005$
South	K0	5280	1.25	$-4.03 \pm 0.74$	$0.52 \pm 0.02$	$0.10 \pm 0.01$	$0.38 \pm 0.02$	$22 \pm 6$	$-2 \pm 12$	$0.70 \pm 0.04$	$0.090 \pm 0.005$

**Notes.** See text for parameter definition. The reduced  $\chi^2$  values of the best fit model are 1.71 and 1.35 for the North and South component, respectively. <sup>(a)</sup> The PA corresponds to the major axis of the disc with North up and East to the left.

size (HWHM) of the circumstellar environment for a Gaussian radial profile.

The results of the best fit for each S CrA component are summarised in Table 2, and the best fit model for each source is overplotted in Fig. 2. Both components present the same inclinations (very close to face-on) and the same PAs (along the north-south direction). Considering a distance of 130 pc, as did Prato et al. (2003), the angular sizes of the best fit model translate into  $0.108 \pm 0.005$  au and  $0.090 \pm 0.005$  au, which can be compared to the sublimation radius. According to the authors and the considered spectral type, the total luminosity of the S CrA binary system ranges between  $3.0 L_{\odot}$  (Prato et al. 2003) and  $5.5 L_{\odot}$  (Wilking et al. 1992), which can be translated in a range of inner rim radius of 0.11–0.15 au for S CrA N and of 0.06–0.08 au for S CrA S. Our modelling leads to a fraction of total flux over stellar flux of  $3.3 \pm 0.4$  for the North component, and  $1.92 \pm 0.07$  for the South one. These values are consistent with those reported in Prato et al. (2003), namely  $2.89 \pm 1.60$  and  $3.15 \pm 2.00$ , for the North and South component, respectively. Finally, we converted the spectral slope of the circumstellar component  $k_c$  derived from interferometric data into a dust temperature: we obtained dust temperatures varying around 810–1200 K for S CrA N, and around 850–1050 K for S CrA S. These temperatures are lower than the a priori dust sublimation temperature of 1500 K generally considered for the silicate, which is not surprising since a part of the observed circumstellar environment is beyond the dust sublimation radius.

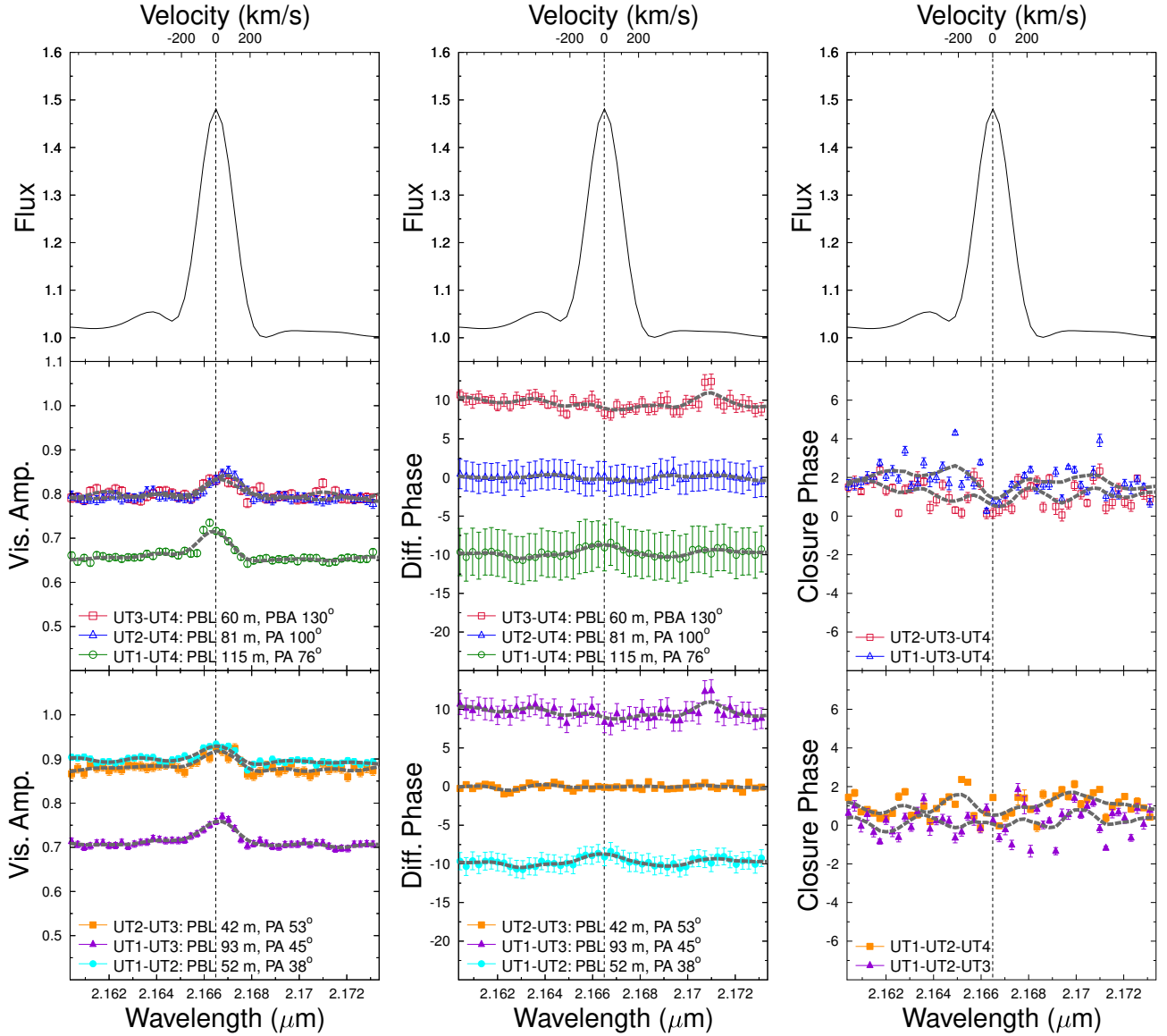
#### 4.2. Bry line emitting region of S CrA N

To further investigate the apparent different dimensions of the red- and blue-shifted components of the Bry line, we performed a channel-by-channel geometric modelling of the pure Bry line visibilities shown in Fig. 4, using a Gaussian. First, we fitted the

line visibilities with only the Gaussian semi-major axis  $a$  as the only one free parameter, and assuming the same disc inclination and PAs as derived for the continuum (Table 2).

Table 3 shows the size of the semi-major axis ( $a_{\text{Bry}}$ ) of our best Gaussian fittings for each spectral channel, along with the  $\chi^2$  values of the fitting. Open squares in Fig. B.2 show the results of our fitting for each baseline and spectral channel. In principle, the Bry line emission is not expected to have the same spatial distribution as the continuum, and indeed, the single-parameter fit shows that at least the angular size is different. Accordingly, similar series of fits were performed with three free parameters:  $a$ ,  $i$ , and PA. The results are listed in Table 3 and shown in Fig. B.2 (triangles). The figure shows that the three-parameter fit is only slightly better than the one-parameter fit. However, its reduced  $\chi_r^2$  is worse because of the larger number of free parameters (meaning that the three-parameter-fit  $\chi^2$  value does not decrease significantly). No significant change in the channel-by-channel size of the Bry line emitting region within the blue- and red-shifted Bry line components is observed. However, the values of the PA in the three-parameter fit do give a hint of different structures of the Bry line emitting region between the blue and red wings of the line. Presumably, the geometry is more complex than our simple models, and our results should be considered as an incentive to perform new observations with a better coverage of the  $uv$  plane, allowing more complex models to be tested.

Notably, when averaging the visibilities of the red- and blue-shifted line components over three spectral channels (Fig. B.1 in Appendix B), the averaged pure Bry line visibilities indeed show a difference between the blue- and red-shifted components for the three longest baselines. The corresponding averaged  $a_{\text{Bry}}$  over three spectral channels, at roughly  $\sim 34 \text{ km s}^{-1}$  and  $\sim 75 \text{ km s}^{-1}$  on average, shows that the size of the blue-shifted Bry line emitting region ( $a_{\text{Bry}} = 0.58 \pm 0.07 \text{ mas}$ ) is larger than the red-shifted one ( $a_{\text{Bry}} = 0.46 \pm 0.03 \text{ mas}$ ). At a distance

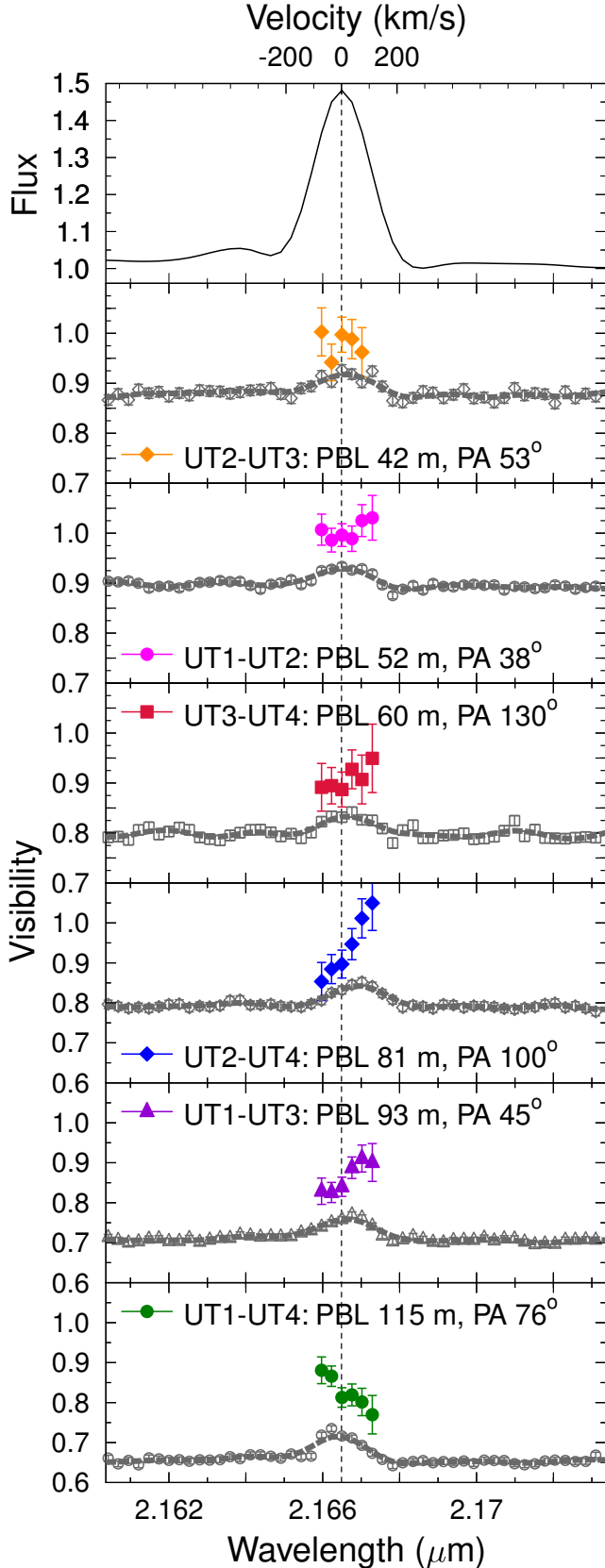


**Fig. 3.** GRAVITY+UT HR observations of S CrA N on 2016 July 20. The Bry line profile normalised to the continuum is shown in the *top row*. The radial velocity is with respect to the LSR. Dashed lines represent smoothed data by two spectral channels. *Left:* wavelength-dispersed visibility amplitudes measured in the UT3-UT4, UT2-UT4, and UT1-UT4 (*middle row*), and the UT2-UT3, UT1-UT3, and UT1-UT2 (*bottom row*) baselines. *Middle:* same as left, but for the wavelength-dispersed differential-phase signals. For clarity, the differential phases of the first and last baselines have been shifted by  $+10^\circ$  and  $-10^\circ$ . *Right:* wavelength-dispersed closure phase signals for the triplets UT2-UT3-UT4 and UT1-UT3-UT4 (*middle row*), and UT1-UT2-UT4 and UT1-UT2-UT3 (*bottom row*).

**Table 3.** Geometric Gaussian fitting: pure Bry line visibilities.

RV [km s <sup>-1</sup> ]	Single-parameter fit		Three-parameter fit			
	$\chi_r^2$	$a^a$ [mas]	$\chi_r^2$	$a^a$ [mas]	$i$ [°]	PA <sup>b</sup> [°]
-71	1.96	0.49 ± 0.04	2.51	0.63 ± 0.16	32 <sup>+7</sup> <sub>-9</sub>	162 ± 19
-35	2.03	0.51 ± 0.03	2.09	0.66 ± 0.14	31 <sup>+7</sup> <sub>-7</sub>	168 ± 15
3	1.45	0.54 ± 0.03	2.54	0.54 ± 0.07	40 <sup>+4</sup> <sub>-6</sub>	153 ± 44
39	0.60	0.48 ± 0.03	0.92	0.47 ± 0.04	38 <sup>+7</sup> <sub>-9</sub>	77 ± 48
75	2.12	0.46 ± 0.04	2.92	0.46 ± 0.05	32 <sup>+12</sup> <sub>-16</sub>	85 ± 31
112	2.38	0.47 ± 0.06	3.39	0.47 ± 0.07	29 <sup>+12</sup> <sub>-17</sub>	77 ± 36

**Notes.** Single and three-parameter fit of pure Bry line visibilities at different radial velocities (RV). <sup>(a)</sup> Size of the semimajor axis. <sup>(b)</sup> Position Angle of the semimajor axis with North up and East to the left.



**Fig. 4.** S CrA N continuum-compensated pure Bry line visibilities (full coloured symbols) computed for each of the six GRAVITY baselines. As a reference, the Bry line profile normalised to the continuum is displayed in the *top panel*. The wavelength dispersed visibility amplitudes are overplotted for each PBL (empty grey symbols), along with a spectral binning of the visibility amplitudes (solid grey line). Velocities are with respect to the LSR.

of 130 pc, these values correspond to radii of  $0.075 \pm 0.008$  au and  $0.060 \pm 0.004$  au, which is much smaller than the inner rim size and the dust sublimation radius, which is larger than 0.11 au.

It should be noted that in addition to the statistical and observational errors, the absolute values of the continuum compensated Bry line visibilities could be also affected by the uncertainty on the assumed stellar parameters (e.g. spectral type, continuum flux). Taking this into account, we have recomputed the pure Bry line visibilities assuming a 10% weaker line flux in the wings and a 10% higher flux of the continuum (see Table B.1). Both scenarios only marginally affect the pure Bry line visibilities, and our main conclusions are not affected. Finally, it should be noticed that the differential phase values and their errors, were taken into account when estimating the pure continuum compensated Bry line visibilities. Summarising, the difference in size between the blue- and red-shifted Bry line components is mainly due to the asymmetry in shape of the total visibilities with respect to the line profile. Furthermore, a different value of the assumed stellar parameters would not change the slope of the pure Bry line visibilities, as they would affect each spectral channel in the same way, especially at this low spectral resolution.

## 5. Discussion

Our *K*-band GRAVITY high spectral resolution results, along with previous *H*- and *K*-band AMBER and PIONIER low-resolution observations, add to one of the best-studied T Tauri stars in the NIR continuum dust and its innermost hydrogen circumstellar gas and represent, to date, the first detailed interferometric study of the inner disc regions of a T Tauri binary system (see Fig. 5).

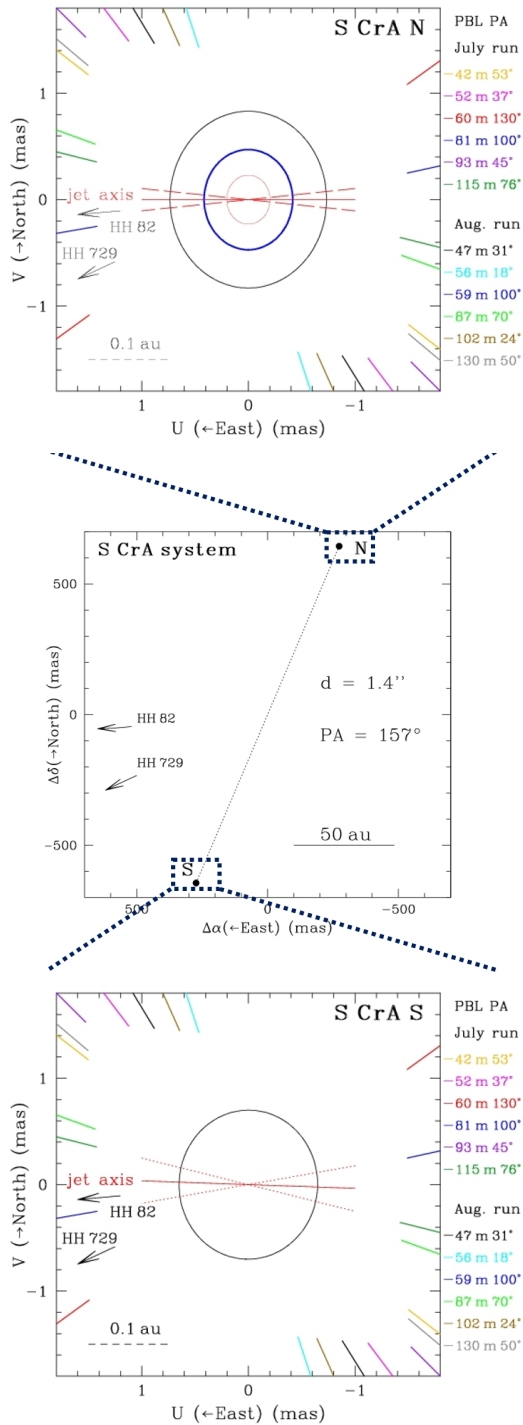
### 5.1. Continuum emission

The size derived for the continuum ( $r = 0.108$  au) of S CrA N, is in excellent agreement with the values found by Vural et al. (2012,  $r \sim 0.11$  au) and Anthonioz et al. (2015,  $r \sim 0.108$  au). Moreover our estimates of the disc orientation and inclination ( $PA = 0^\circ \pm 6^\circ$  and  $i = 28^\circ \pm 3^\circ$ ) are close to those proposed by Pontoppidan et al. (2011) for their disc wind model ( $PA = 15^\circ$  and  $i = 10^\circ$ , respectively). These values were obtained from the spectro-astrometric analysis of the CO fundamental lines at  $4.7 \mu\text{m}$ . For the spatial orientation of the binary system, the similarity in PA and  $i$  of the discs of both components indicates that they were likely formed from the fragmentation of a common gravitationally unstable disc. Indeed, there are two main pathways to form binary or multiple systems: large-scale fragmentation of turbulent cores and filaments or disc fragmentation (see e.g. Adams et al. 1989; Bonnell & Bate 1994; Fisher 2004). There is direct and indirect observational evidence for both mechanisms (see e.g. Jensen & Akeson 2014; Tobin et al. 2016). Direct observation mostly relies on ALMA imaging of the outer dusty disc (tens to hundreds of au), whereas indirect evidence mainly comes from the orientation of the jets (on scales from hundreds to thousands of au). Our analysis demonstrates that NIR interferometry can provide further evidence, giving direct information on the inner dusty disc geometry (down to sub-au scale) and on the system geometry of the binary system.

### 5.2. Bry emission line in S CrA N

Our GRAVITY-HR observations of S CrA N show a very compact, but resolved, Bry emitting region with a radius of





**Fig. 5.** *Top:* sketch of S CrA N as inferred from our GRAVITY observations. The grey and blue ellipses display the positions of the continuum and the Br $\gamma$  emitting regions, respectively. The red ellipse displays the inner truncation radius. The red dashed lines show the jet axis position with its uncertainty. Solid coloured lines show the orientation of the baselines along with their lengths and position angles. *Middle:* sketch of the S CrA system. *Bottom:* sketch of S CrA S as inferred from our GRAVITY observations in the continuum.

$r \sim 0.06$  au, and thus, located well within the S CrA N dust sublimation radius which is larger than 0.11 au. This small size places the origin of this line in the innermost regions of circumstellar discs, where different physical processes can contribute to its emission: magnetospheric accretion, wind, or heating of

the hot upper layers of the disc. Similar results have also been found in other interferometric studies of Herbig Ae/Be and CTTSs (Kraus et al. 2008; Eisner et al. 2014). Indeed the most recent studies of Herbig Ae/Be stars have successfully modelled Br $\gamma$  interferometric observations using the disc surface (Ellerbroek et al. 2014; Mendigutía et al. 2015), a disc-wind, or a stellar-wind (Weigelt et al. 2011; Garcia Lopez et al. 2015, 2016; Caratti o Garatti et al. 2015; Kurosawa et al. 2016) as the main emitting mechanism for the Br $\gamma$  line. On the other hand, the origin of the Br $\gamma$  line in CTTSs is still uncertain (Eisner et al. 2010). This is mostly due to the small size of the emitting region, which requires long baselines (of the order of 100 m or more) to be spatially resolved, as well as high spectral resolution to analyse the different velocity components of the line.

Our GRAVITY observations add a fundamental ingredient to the interpretation of the origin of the Br $\gamma$  line and the physical processes taking place in the inner gaseous regions of CTTSs. For the first time, it has been possible to constrain the size of the emitting region and tentatively measure slight changes in the continuum-compensated pure Br $\gamma$  visibilities as a function of the line radial velocity (Fig. 4). Our simple geometric Gaussian fitting points to slightly different dimensions of the region emitting the blue- and red-shifted Br $\gamma$  line components in S CrA N, with a red-shifted Br $\gamma$  emitting region slightly smaller than the blue-shifted one ( $r_{\text{red}} \sim 0.060 \pm 0.004$  au vs.  $r_{\text{blue}} \sim 0.075 \pm 0.008$  au). It should be noted, however, that our estimates of the continuum compensated Br $\gamma$  line visibilities are subject to unaccounted uncertainties such as the uncertainty on the spectral type of S CrA N and the continuum level across the Br $\gamma$  line. Even so, the emitting region of the blue- and red-shifted Br $\gamma$  line components is, however, around a factor of two larger than the typical CTTS truncation radius of  $r_{\text{trun}} \sim 5 R_*$ , that is  $r_{\text{trun}} \sim 0.03$  au assuming a stellar radius  $R_*$  of  $1.4 R_\odot$  (Petrov et al. 2014). This would suggest a wind origin of the Br $\gamma$  line in S CrA N, that would be supported by the presence of a large-scale protostellar jet arising from this source (Peterson et al. 2011). The base of a wind launched from the disc would initially rotate at the disc Keplerian rotation expected at the location of the footpoint of the wind. Assuming a stellar mass of  $M_* \sim 1.5 M_\odot$  (Prato et al. 2003), the disc Keplerian velocity at a distance from the star of 0.06 au is  $RV_K \sim 150 \text{ km s}^{-1}$ , which translates into a radial velocity of  $\sim 70 \text{ km s}^{-1}$  assuming a disc inclination angle of  $i = 28^\circ$ . This value is then in good agreement with both the Br $\gamma$  line FWHM ( $\sim 180 \text{ km s}^{-1}$ ) measured in S CrA N, and the velocity range ( $-71 \text{ km s}^{-1} < RV < 112 \text{ km s}^{-1}$ ) used to measure the size of the continuum-compensated Br $\gamma$  line emitting region. Notably, Pontoppidan et al. (2011) also model a disc-wind from their analysis of the CO fundamental lines in S CrA N. However, this wind is emitted at larger distance from the source ( $\sim 100 R_*$  or  $\sim 0.6$  au). Therefore, it is reasonable to infer that we are observing the more compact atomic component of a disc-wind, that has an “onion-like” velocity structure, as proposed for example in DG Tau by Agra-Amboage et al. (2014).

On the other hand, given that the difference in size between the blue- and red-shifted Br $\gamma$  line components is real, our data exclude that the size asymmetry of the Br $\gamma$  line components might be due to the jet (orthogonal to the disc major axis PA, i.e.  $90^\circ \pm 6^\circ$ ), as the visibility does not decrease for baselines roughly aligned with the jet PA. Moreover the analysed portion of the Br $\gamma$  spectrum should not trace the jet emission, likely traced by the high-velocity component and possibly collimated at several au from the source (Ray et al. 2007), thus outside our FoV. We can also exclude that the small difference in size is due to a screening effect by optically thick foreground continuum,

as the geometry of the system is almost face on. More likely, the slight size difference between the blue- and red-shifted Bry line components is due to a compact magnetosphere coexisting with the disc wind emission. As shown in previous interferometric studies, a magnetosphere would only slightly contribute to the total Bry line intensity, but it would modify the line profile along the wings and increase the continuum-compensated Bry line visibilities of the red-shifted component (Garcia Lopez et al. 2015, 2016; Kurosawa et al. 2016; Tambovtseva et al. 2016). These characteristic features are, indeed, observed in S CrA N: namely the inverse PCygni profile in both HeI and Bry lines, and a smaller size of the red-shifted Bry line emitting region. In contrast, while a disc wind can easily provide the shape of the blue wing, it cannot reproduce alone the red-shifted absorption component, which in turn can be easily shaped by magnetospheric accretion. As already mentioned, previous optical observations of S CrA N display inverse PCygni profiles in several H I Balmer lines with radial velocities similar to that measured in the Bry line. In particular, Bertout et al. (1982) find that the red-shifted absorption feature is persistent during twelve consecutive nights. This supports the presence of an accretion column closely viewed pole-on (Kurosawa & Romanova 2013), in agreement with the low inclination angle derived here.

## 6. Conclusion

Our GRAVITY observations of S CrA in the *K* band continuum show two disc-like structures around each component of the binary system, with similar inclination and PA, suggesting that they originate from the fragmentation of a common parent disc. Both sources have comparable NIR continuum radii of  $\sim 0.1$  au, while the dust sublimation radius is about 0.11–0.15 au and 0.06–0.08 au for the North and South components, respectively. Moreover, thanks to our observations at high spectral ( $R \sim 4000$ ) and spatial resolution, we managed to probe the innermost regions of the S CrA N component: its inner dusty disc encloses a compact Bry emitting region of  $r \sim 0.06$  au, which is located in the inner gaseous disc but well beyond the truncation radius. Finally, our results indicate the presence of a wind and magnetospheric accretion traced by the Bry line in S CrA N, and for the first time, a tentative measure of slightly different dimensions of the region emitting the blue- and red-shifted components is attempted. Further observations of a sample of T Tauri stars with different masses, ages and disc properties are planned with GRAVITY in the coming years with the aim of spatially resolving the hot (H I) and warm (CO) gas in discs and investigating the structure, evolution and dynamics of discs of young stellar objects on sub-au scales.

*Acknowledgements.* These results are based on observations made with ESO Telescopes at the La Silla Paranal Observatory under programme IDs 60.A-9102. We thank the technical, administrative, and scientific staff of the participating institutes and the observatory for their extraordinary support during the development, installation, and commissioning of GRAVITY. R.G.L has received funding from the European Union's Horizon 2020 research and innovation programme under the Marie Skłodowska-Curie Grant Agreement No. 706320. A.C.G. and T.P.R. were supported by Science Foundation Ireland, grant 13/ERC/I2907. J.S.B acknowledges the support from the Alexander von Humboldt Foundation Fellowship Programme (Grant number ESP 1188300 HFST-P). K.P., B.L., M.B., and C.D. acknowledge the support of the French PNP. This work has been

supported by a grant from LabEx OSUG@2020 (Investissements d'avenir – ANR10LABX56). This research has made use of the Jean-Marie Mariotti Center Aspro and SearchCa1 services<sup>1</sup>, and of CDS Astronomical Databases SIMBAD and VIZIER<sup>2</sup>.

## References

- Adams, F. C., Ruden, S. P., & Shu, F. H. 1989, *ApJ*, 347, 959  
 Agra-Amboage, V., Cabrit, S., Dougados, C., et al. 2014, *A&A*, 564, A11  
 Alexander, R., Pascucci, I., Andrews, S., Armitage, P., & Cieza, L. 2014, *Protostars and Planets VI* (Tucson: University of Arizona Press), 475  
 Anthonioz, F., Ménard, F., Pinte, C., et al. 2015, *A&A*, 574, A41  
 Appenzeller, I., Jetter, R., & Jankovics, I. 1986, *A&AS*, 64, 65  
 Benisty, M., Natta, A., Isella, A., et al. 2010, *A&A*, 511, A74  
 Bertout, C., Wolf, B., Carrasco, L., & Mundt, R. 1982, *A&AS*, 47, 419  
 Bonnell, I. A., & Bate, M. R. 1994, *MNRAS*, 271, 999  
 Caratti o Garatti, A., Tambovtseva, L. V., Garcia Lopez, R., et al. 2015, *A&A*, 582, A44  
 Carmona, A., van den Ancker, M. E., & Henning, T. 2007, *A&A*, 464, 687  
 Edwards, S., Fischer, W., Hillenbrand, L., & Kwan, J. 2006, *ApJ*, 646, 319  
 Eisenhauer, F., Perrin, G., Brandner, W., et al. 2011, *The Messenger*, 143, 16  
 Eisner, J. A., Chiang, E. I., Lane, B. F., & Akeson, R. L. 2007, *ApJ*, 657, 347  
 Eisner, J. A., Monnier, J. D., Woillez, J., et al. 2010, *ApJ*, 718, 774  
 Eisner, J. A., Hillenbrand, L. A., & Stone, J. M. 2014, *MNRAS*, 443, 1916  
 Ellerbroek, L. E., Podio, L., Dougados, C., et al. 2014, *A&A*, 563, A87  
 Fisher, R. T. 2004, *ApJ*, 600, 769  
 Garcia Lopez, R., Tambovtseva, L. V., Schertl, D., et al. 2015, *A&A*, 576, A84  
 Garcia Lopez, R., Kurosawa, R., Caratti o Garatti, A., et al. 2016, *MNRAS*, 456, 156  
 Gravity Collaboration, Abuter, R., Accardo, M., et al. 2017, *A&A*, 602, A94  
 Jensen, E. L. N., & Akeson, R. 2014, *Nature*, 511, 567  
 Kraus, S., Hofmann, K., Benisty, M., et al. 2008, *A&A*, 489, 1157  
 Kraus, S., Ireland, M. J., Sitko, M. L., et al. 2013, *ApJ*, 768, 80  
 Krautter, J., Appenzeller, I., & Jankovics, I. 1990, *A&A*, 236, 416  
 Kumar, M. S. N., Sharma, S., Davis, C. J., Borissova, J., & Grave, J. M. C. 2011, *A&A*, 533, A137  
 Kurosawa, R., & Romanova, M. M. 2013, *MNRAS*, 431, 2673  
 Kurosawa, R., Romanova, M. M., & Harries, T. J. 2011, *MNRAS*, 416, 2623  
 Kurosawa, R., Kreplin, A., Weigelt, G., et al. 2016, *MNRAS*, 457, 2236  
 Lafresse, S., Mella, G., Bonneau, D., et al. 2010, *VizieR Online Data Catalog: II/300*  
 Lapeyriere, V., Kervella, P., Lacour, S., et al. 2014, in *Optical and Infrared Interferometry IV*, Proc. SPIE, 9146, 91462  
 Lazareff, B., Berger, J.-P., Kluska, J., et al. 2017, *A&A*, 599, A85  
 Mendigutía, I., de Wit, W. J., Oudmajer, R. D., et al. 2015, *MNRAS*, 453, 2126  
 Neuhäuser, R., & Forbrich, J. 2008, *The Corona Australis Star Forming Region*, ed. B. Reipurth, 735  
 Pecaut, M. J., & Mamajek, E. E. 2013, *ApJS*, 208, 9  
 Peterson, D. E., Caratti o Garatti, A., Bourke, T. L., et al. 2011, *ApJS*, 194, 43  
 Petrov, P. P., Gahm, G. F., Herczeg, G. J., Stempels, H. C., & Walter, F. M. 2014, *A&A*, 568, L10  
 Pontoppidan, K. M., Blake, G. A., & Smette, A. 2011, *ApJ*, 733, 84  
 Prato, L., Greene, T. P., & Simon, M. 2003, *ApJ*, 584, 853  
 Ray, T., Dougados, C., Bacciotti, F., Eisloffel, J., & Chrysostomou, A. 2007, in *Protostars and Planets V*, eds. B. Reipurth, D. Jewitt, & K. Keil, 231  
 Reipurth, B., & Zinnecker, H. 1993, *A&A*, 278, 81  
 Sicilia-Aguilar, A., Henning, T., Linz, H., et al. 2013, *A&A*, 551, A34  
 Tambovtseva, L. V., Grinin, V. P., & Weigelt, G. 2016, *A&A*, 590, A97  
 Tannirkulam, A., Monnier, J. D., Harries, T. J., et al. 2008, *ApJ*, 689, 513  
 Tatulli, E., Millour, F., Chelli, A., et al. 2007, *A&A*, 464, 29  
 Tobin, J. J., Kratter, K. M., Persson, M. V., et al. 2016, *Nature*, 538, 483  
 Vural, J., Kreplin, A., Kraus, S., et al. 2012, *A&A*, 543, A162  
 Walker, M. F. 1972, *ApJ*, 175, 89  
 Wang, H., Mundt, R., Henning, T., & Apai, D. 2004, *ApJ*, 617, 1191  
 Weigelt, G., Kraus, S., Driebe, T., et al. 2007, *A&A*, 464, 87  
 Weigelt, G., Grinin, V. P., Groh, J. H., et al. 2011, *A&A*, 527, A103  
 Wilking, B. A., Greene, T. P., Lada, C. J., Meyer, M. R., & Young, E. T. 1992, *ApJ*, 397, 520

<sup>1</sup> Available at <http://www.jmmc.fr/>

<sup>2</sup> Available at <http://cdsweb.u-strasbg.fr/>

Appendix A: Interferometric observations of S CrA S around the Br $\gamma$  line and continuum visibilities

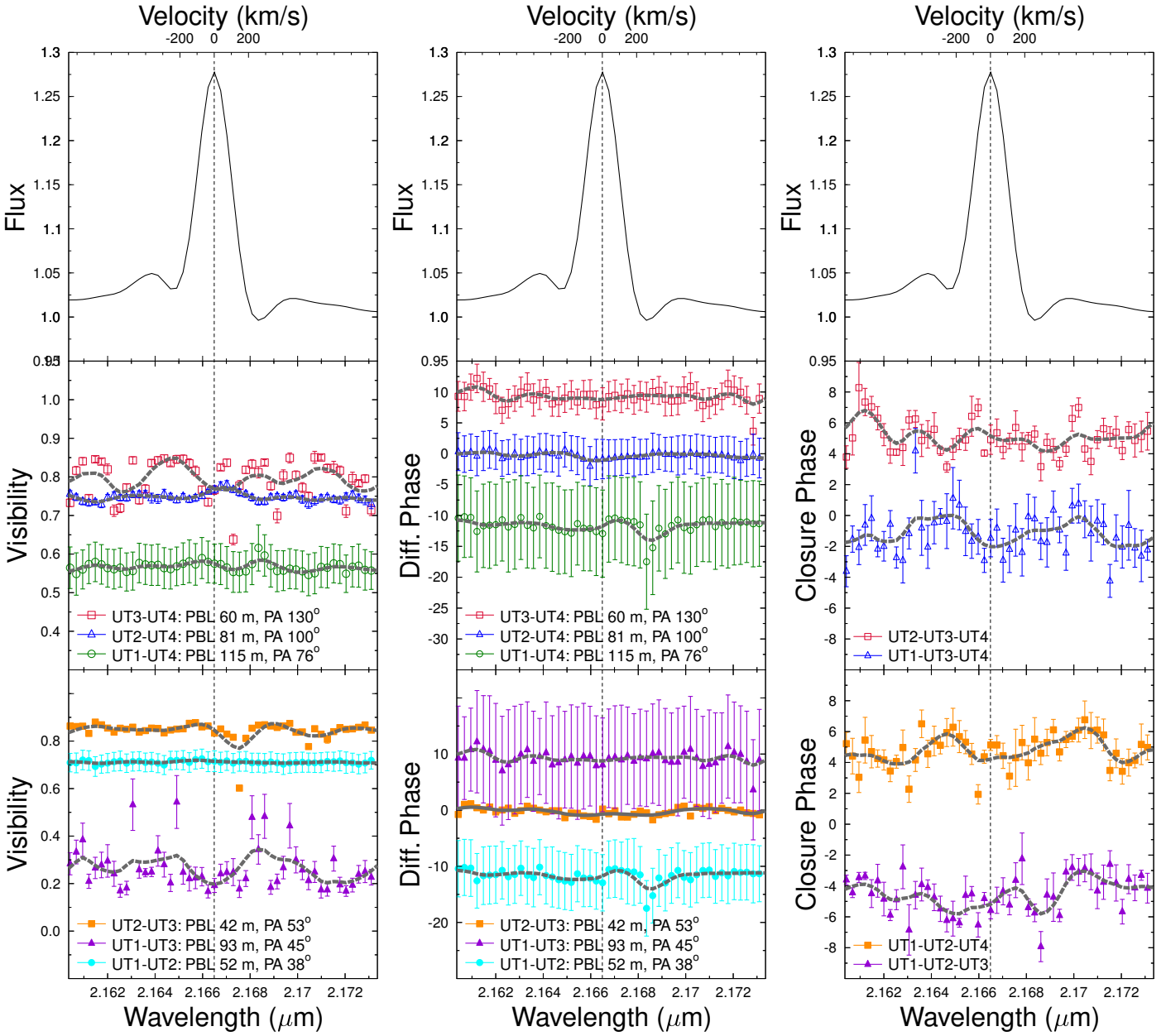
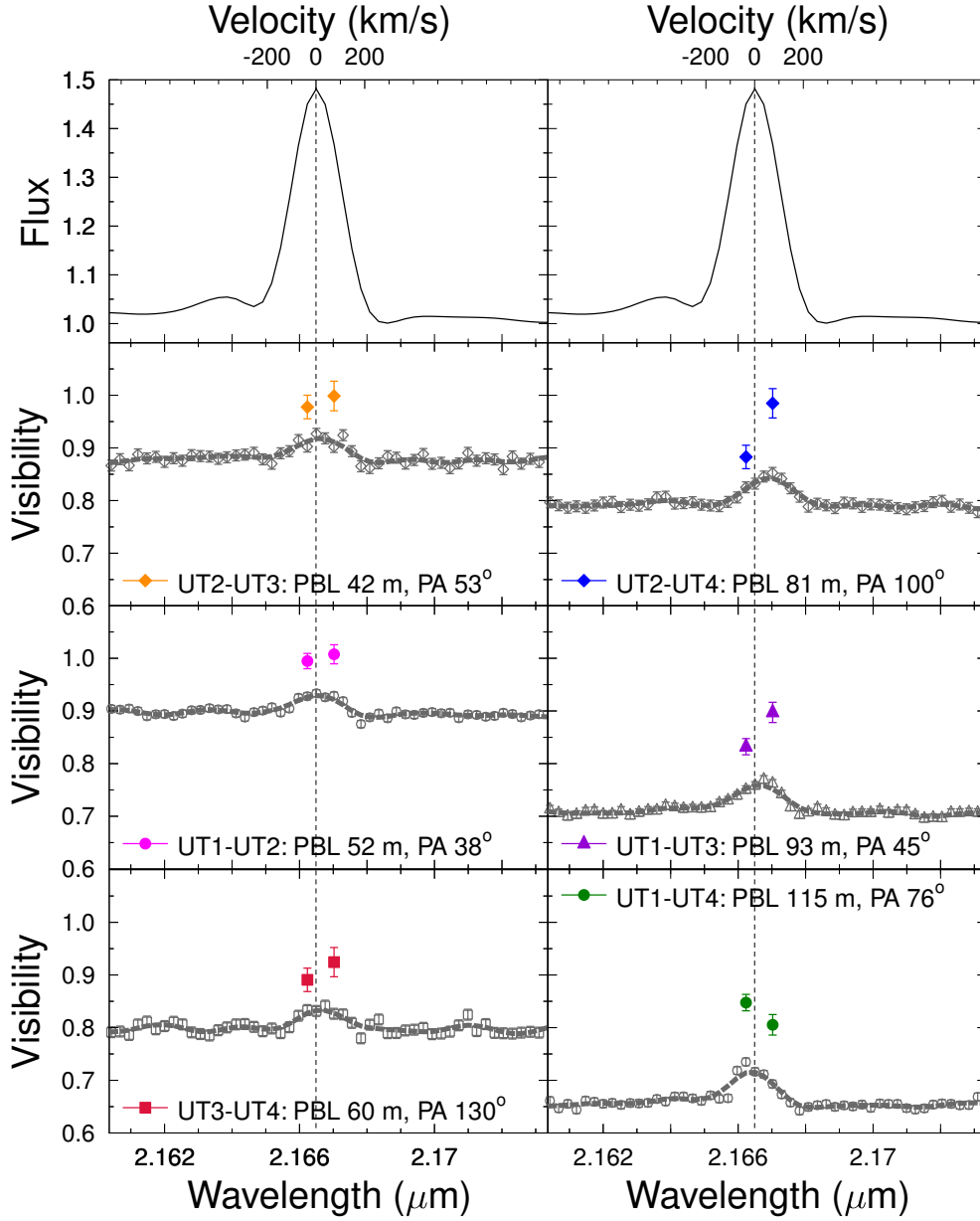


Fig. A.1. Same as Fig. 3, but for S CrA S.

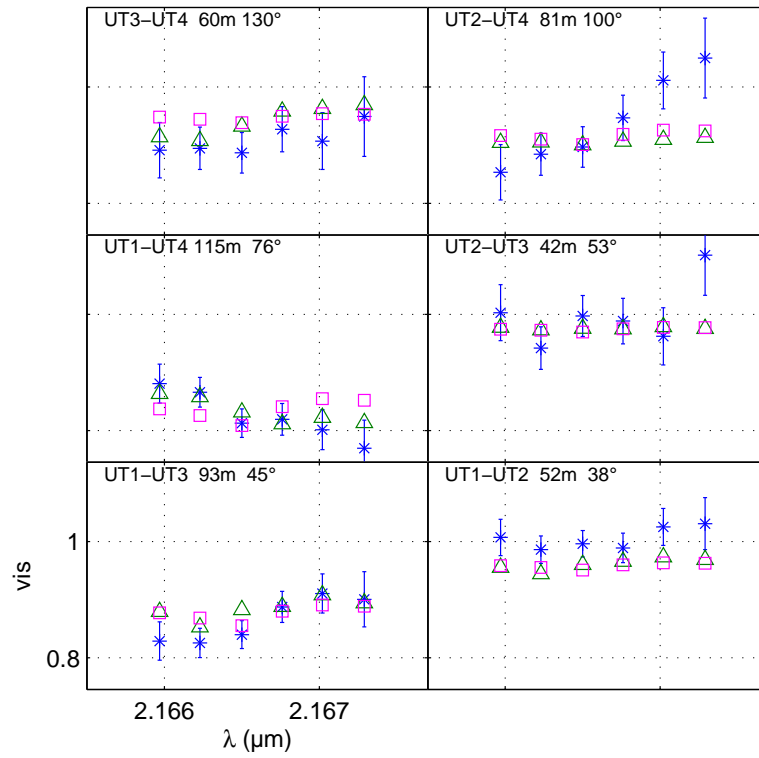
**Appendix B: Pure Br $\gamma$  line visibilities of S CrA N**


**Fig. B.1.** SCrA N continuum-compensated pure Br $\gamma$  visibilities (full coloured symbols) computed for each of the six GRAVITY baselines and averaged over three spectral channels.

**Table B.1.** S CrA N continuum compensated pure Br $\gamma$  line visibilities.

PBL [m]	PA [ $^{\circ}$ ]	$V_{\text{Bry}}^{\text{blue}a}$	$V_{\text{Bry}}^{\text{red}a}$	$V_{\text{Bry}}^{\text{blue}b}$	$V_{\text{Bry}}^{\text{red}b}$	$V_{\text{Bry}}^{\text{blue}c}$	$V_{\text{Bry}}^{\text{red}c}$
42	53	$0.98 \pm 0.02$	$1.00 \pm 0.02$	$1.00 \pm 0.03$	$1.00 \pm 0.03$	$1.00 \pm 0.03$	$1.00 \pm 0.03$
52	38	$0.99 \pm 0.01$	$1.00 \pm 0.02$	$1.00 \pm 0.02$	$1.00 \pm 0.02$	$1.00 \pm 0.02$	$1.00 \pm 0.02$
60	130	$0.89 \pm 0.02$	$0.92 \pm 0.03$	$0.99 \pm 0.02$	$1.00 \pm 0.03$	$0.91 \pm 0.03$	$0.96 \pm 0.03$
81	100	$0.88 \pm 0.02$	$0.98 \pm 0.03$	$0.98 \pm 0.02$	$1.00 \pm 0.03$	$0.90 \pm 0.02$	$1.00 \pm 0.04$
93	45	$0.83 \pm 0.01$	$0.90 \pm 0.02$	$0.93 \pm 0.02$	$1.00 \pm 0.02$	$0.86 \pm 0.02$	$0.95 \pm 0.02$
115	76	$0.85 \pm 0.01$	$0.80 \pm 0.02$	$0.94 \pm 0.02$	$0.89 \pm 0.02$	$0.89 \pm 0.02$	$0.85 \pm 0.02$

**Notes.** <sup>(a)</sup> Averaged continuum compensated pure Br $\gamma$  visibilities over three spectral channels at  $\sim -34 \text{ km s}^{-1}$  ( $V_{\text{Bry}}^{\text{blue}}$ ) and  $\sim +75 \text{ km s}^{-1}$  ( $V_{\text{Bry}}^{\text{red}}$ ). <sup>(b)</sup> As <sup>(a)</sup> but computed assuming a decrease of the line flux of 10% with respect to the measured one. <sup>(c)</sup> As <sup>(a)</sup> but computed assuming an increase of the continuum flux of 10% with respect to the measured one.



**Fig. B.2.** Best Gaussian fits of the S Cr A N continuum-compensated pure Bry line visibilities (asterisks with error bars) computed for each of the six GRAVITY baselines. Open squares and triangles represent the one-parameter (size) and three-parameter (size, inclination and PA) fits, respectively.